



Concord, NSW

23/143-145 Parramatta Road

2 BED **1** BATH **1** CAR **true** =
PROPERTY

Boasting an ideal and central address, this spacious and practice floorplan is designed for easy living. Offering easy access to Strathfield train station and many other facilities to make every day living easy this definitely one not to be missed.

- = Two bedrooms, main with built-in wardrobe
- = One tiled bathrooms
- = Registered security car space
- = Open plan living and dining leading out to a sundrenched balcony
- = Large kitchen with granite benches and stainless steel appliances
- = Split system air conditioning
- = Security building with lift access
- = Walking distance to shops, local schools and childcare centres and located close to Strathfield Station with a direct bus line to Sydney CBD right outside the complex

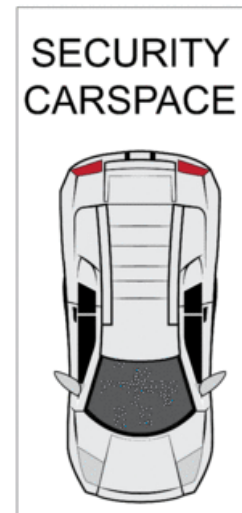
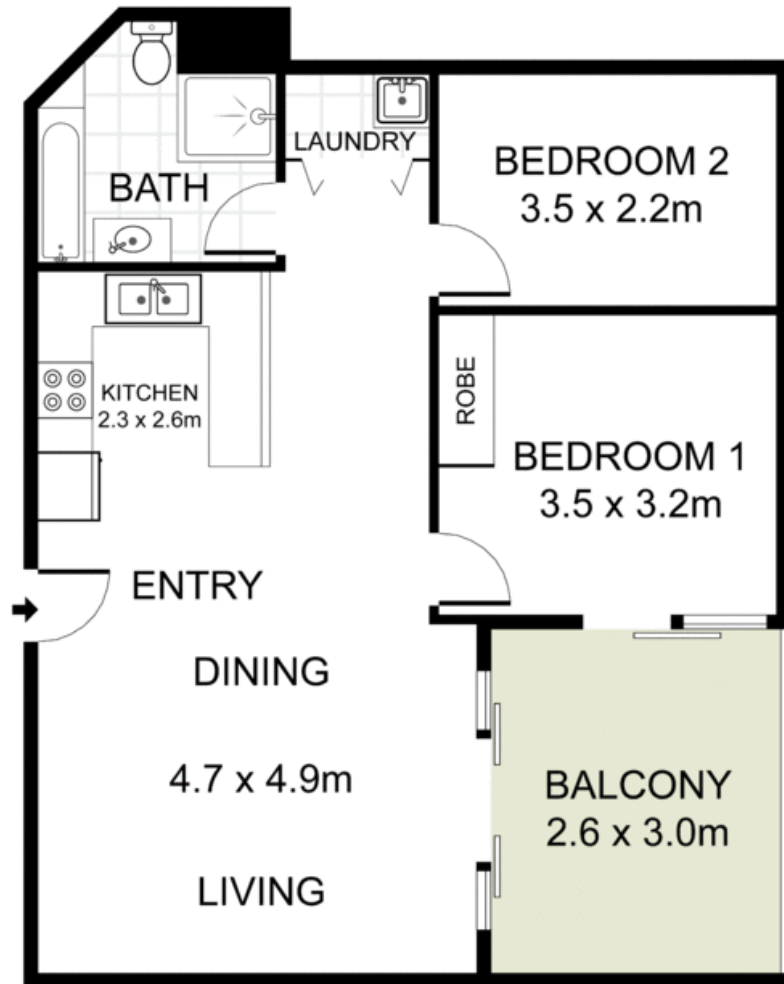
SOLD

Contact: Michael Catalano (Managing Director)
0449 878 376

Type: Apartment

Sold Date: 07/05/2018

<http://www.trueproperty.com.au>



true =
PROPERTY

23/143 Parramatta Road, Concord

INT: 68 m²
EXT: 25 m²

DISCLAIMER: PLANS SHOWN ARE FOR PRESENTATION PURPOSES AND ARE NOT PART OF ANY LEGAL DOCUMENT. ALL MEASUREMENTS AND FIGURES ARE APPROXIMATE.

Plans shown are only indicative of layout. Dimensions are approximate.

Concord, NSW
23/143-145 Parramatta Road