



## 29/345 Victoria Place Drummoyne NSW

1 1 1

Prestigiously set in one of Sydney's favourite bayside suburbs, this architecturally crafted masterpiece was built to maximise natural light and enhance the never-to-be-built-out panoramic views. This location cannot be beaten, a short stroll to award winning restaurants, cafes and CBD transport.

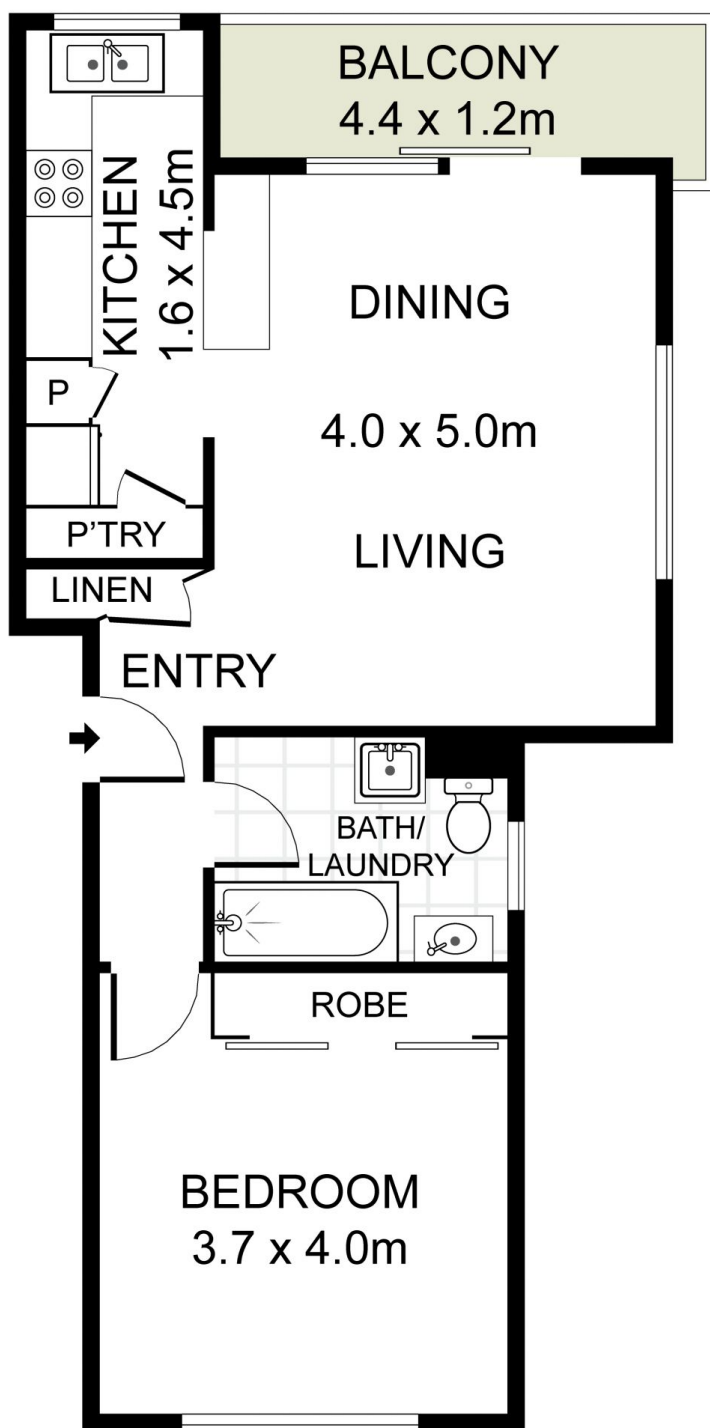
- = One spacious bedroom with built-in wardrobe
- = One tiled bathroom including internal laundry facilities
- = Registered lock up garage including separate storage cage
- = Timber kitchen with plenty of storage
- = Open plan living and dining leading to a picture perfect view of the bay
- = Access to waterfront swimming pool, private jetty and BBQ area, perfect for your entertaining

**Land Size** : 70 sqm

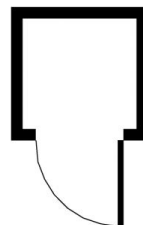
**View** : <https://www.trueproperty.com.au/sale/nsw/inner-west/drummoyne/residential/apartment/5700054>



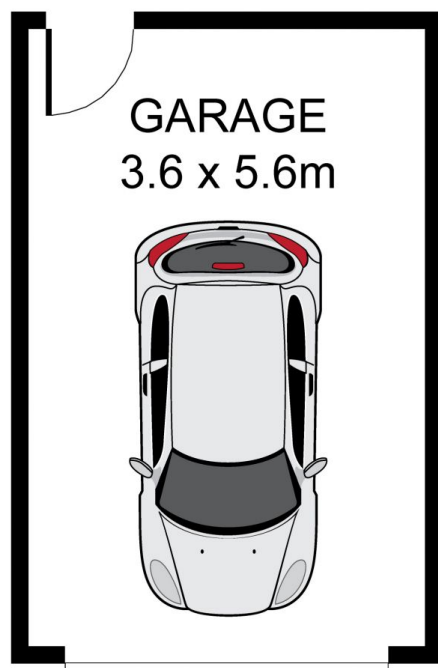
**Michael Catalano**  
8507 2444



**STORAGE  
CAGE**  
1.6 x 1.5m



**INTERNAL  
ACCESS**



**true** =  
P R O P E R T Y

29/345 Victoria Place, Drummoyne

DISCLAIMER: PLANS SHOWN ARE FOR PRESENTATION PURPOSES AND ARE NOT PART OF ANY LEGAL DOCUMENT. ALL MEASUREMENTS AND FIGURES ARE APPROXIMATE.