



## 9/3a Bortfield Drive Chiswick NSW

2 1 1

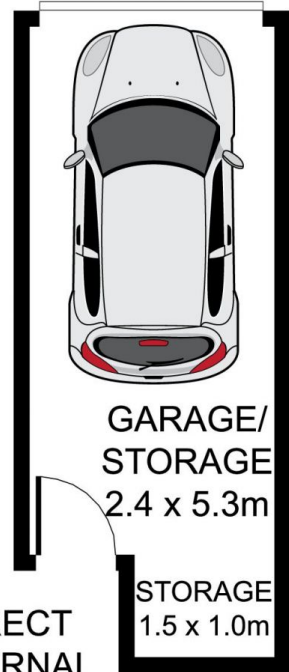
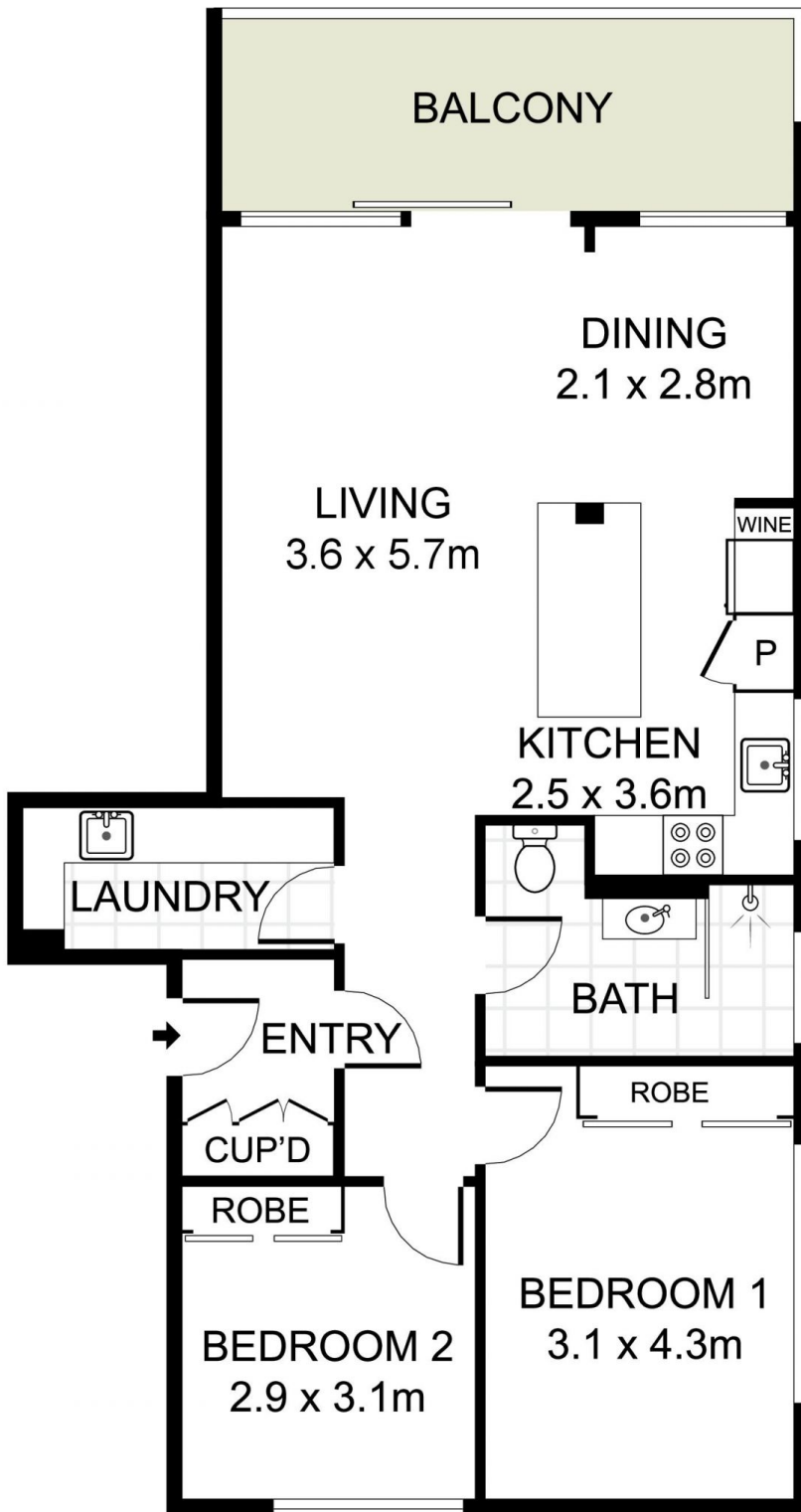
Capturing intimate breathtaking Sydney CBD and water views, this beautifully renovated apartment not only delivers an idyllic sanctuary of style, space and comfort but also promises world class lifestyle excellence and convenience. Destined to impress, this enviable executive residence is ideal for anyone looking for that new special place to call home.

- = Gourmet entertainers kitchen with a dishwasher, stainless steel appliances, pantry and breakfast bar
- = Separate living area saturated with an abundance of natural light leading to an entertainers balcony revealing breathtaking 180 degree sweeping water and city views
- = Two king sized spacious bedrooms, both with built in robes, one immaculate bathroom
- = Secure lock up garage with private access into the apartment complex

**Land Size** : 95 sqm  
**View** : <https://www.trueproperty.com.au/sale/nsw/inner-west/chiswick/residential/apartment/6380684>



**Michael Catalano**  
8507 2444



DIRECT  
INTERNAL  
ACCESS



true =  
PROPERTY

9/3A Bortfield Drive, Chiswick

DISCLAIMER: PLANS SHOWN ARE FOR PRESENTATION PURPOSES AND ARE NOT PART OF ANY LEGAL DOCUMENT. ALL MEASUREMENTS AND FIGURES ARE APPROXIMATE.