

12/9-17 Newton Street Alexandria NSW

2 1 2

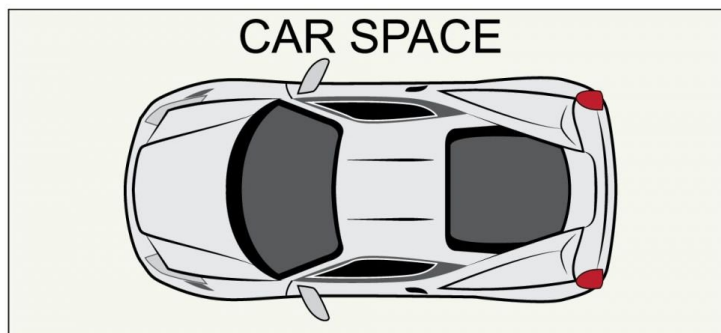
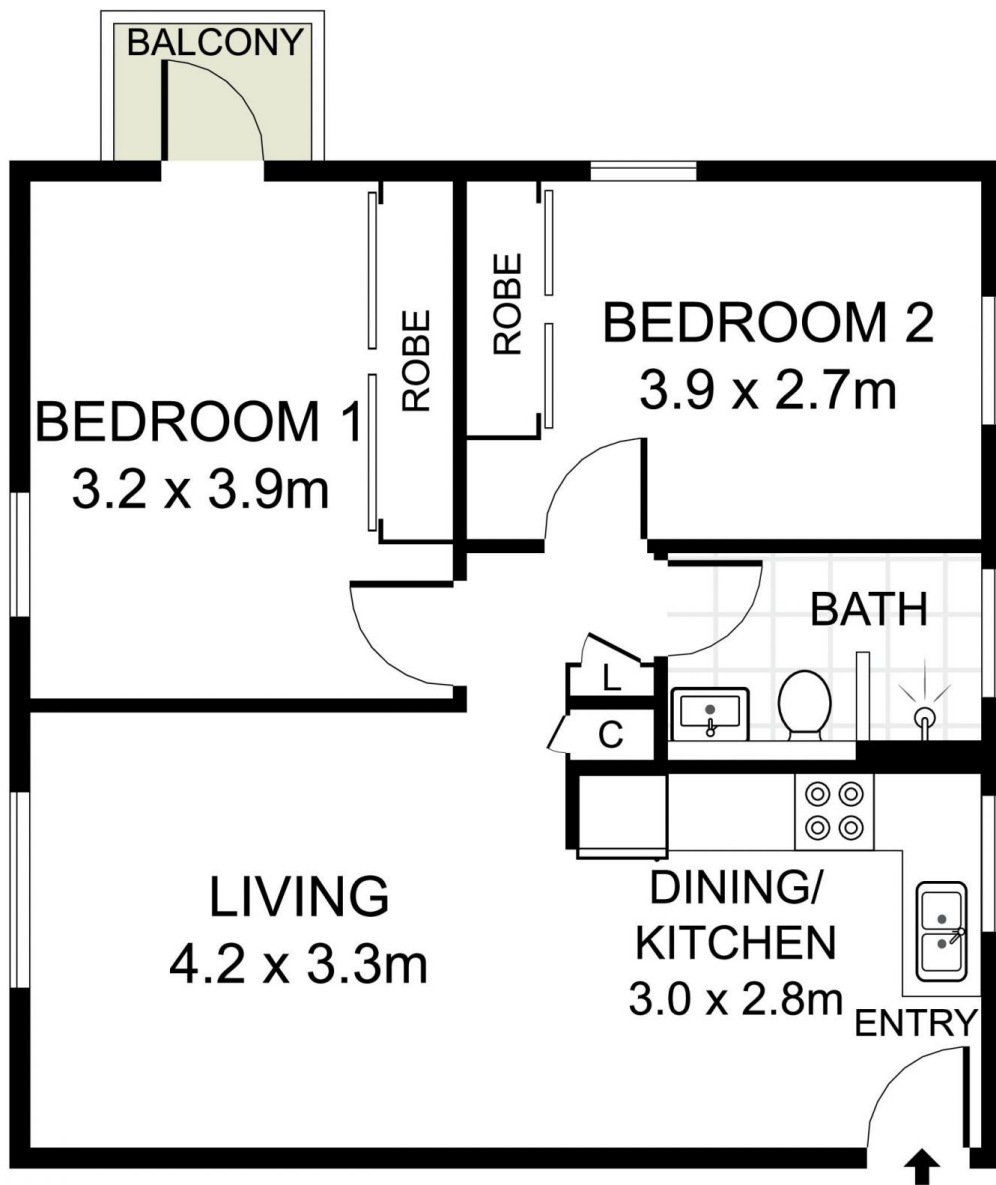
Nestled on the border of cosmopolitan Alexandria and convenient Erskineville lies this partly newly renovated two bedroom oversized apartment. Located just moments to Erskineville train station, beautiful parklands and local schools.

- = Two bedrooms both with built-in wardrobes and small balcony off main bedroom.
- = One tiled bathroom with bathtub
- = Two parking spaces
- = Stunning polyurethane kitchen with Caesar stone benches
- = Open plan living and dining
- = Shared laundry facilities
- = Cosmopolitan Erskineville and Newtown shopping precinct and award winning restaurants just moments away

Land Size : 90 sqm
View : <https://www.trueproperty.com.au/sale/nsw/eastern-suburbs/alexandria/residential/apartment/6470332>



Michael Catalano
8507 2444



true =
PROPERTY

12/9-17 Newton Street, Alexandria

DISCLAIMER: PLANS SHOWN ARE FOR PRESENTATION PURPOSES AND ARE NOT PART OF ANY LEGAL DOCUMENT. ALL MEASUREMENTS AND FIGURES ARE APPROXIMATE.