



3/38-40 Gould Avenue Lewisham NSW

2  **1**  **1** 

Perfectly located lies this beautifully presented two bedroom apartment with leafy park views. With an abundance of natural light throughout and extremely practical layout, those who inspect will surely be left impressed.

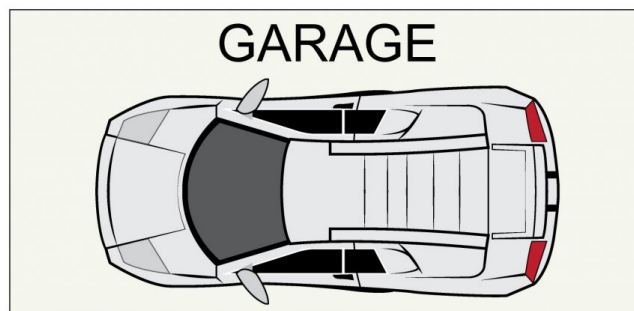
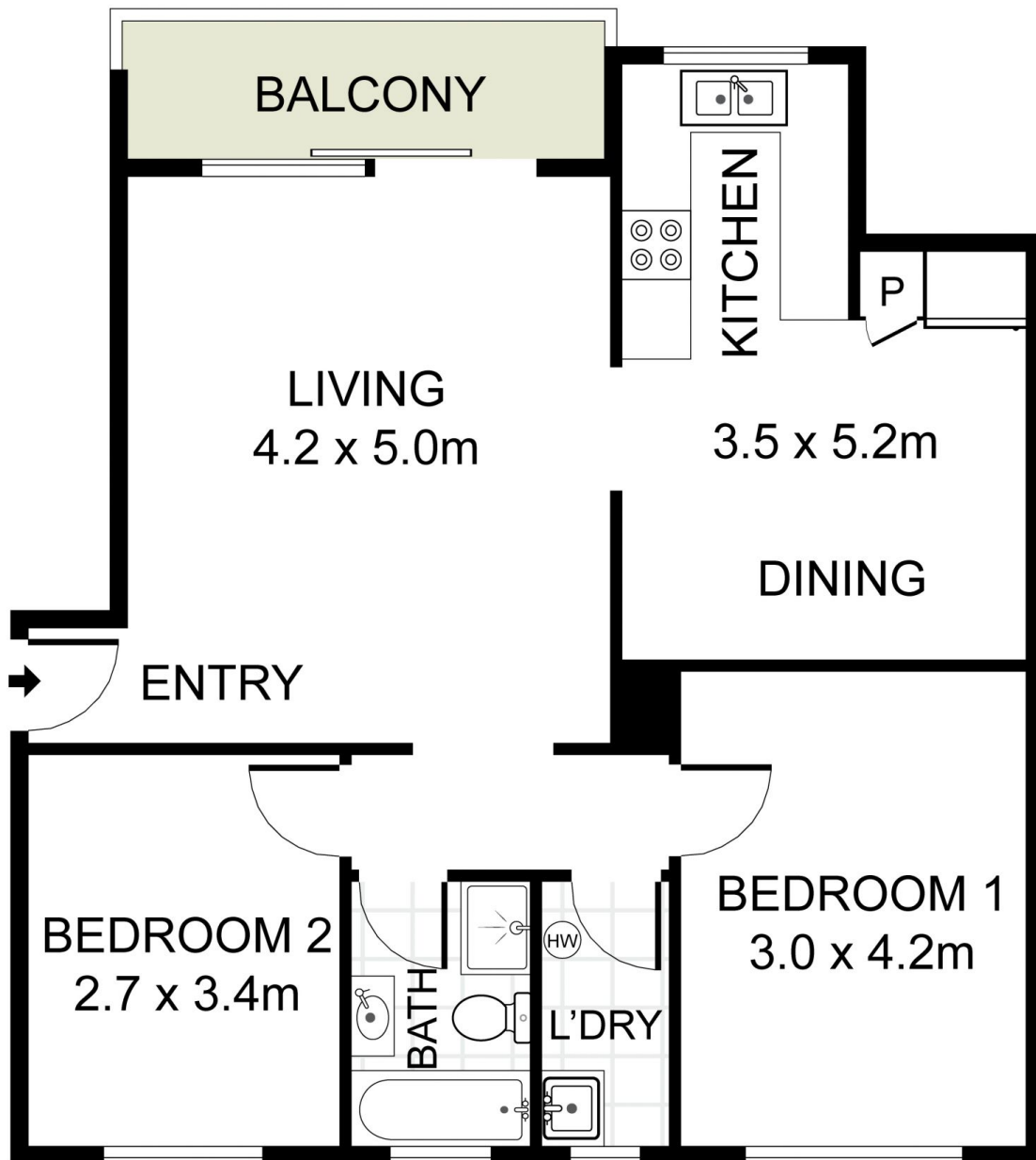
- = Two spacious bedrooms
- = One tiled bathroom
- = Lock up garage with additional storage
- = Separate living and dining lounge
- = Entertainers balcony with leafy views
- = Updated kitchen with timber cabinetry and ample storage

- = Internal laundry facilities
- = Ideally located just moments to public transport, Petersham, Lewisham and Dulwich Hill shopping precincts, beautiful parklands and award winning restaurants and

Price : Sold =
Land Size : 93 sqm
View : <https://www.trueproperty.com.au/sale/nsw/inner-west/lewisham/residential/apartment/6631502>



Michael Catalano
8507 2444



true =
PROPERTY

3/38-40 Gould Avenue, Lewisham

DISCLAIMER: PLANS SHOWN ARE FOR PRESENTATION PURPOSES AND ARE NOT PART OF ANY LEGAL DOCUMENT. ALL MEASUREMENTS AND FIGURES ARE APPROXIMATE.