

1210/199 Castlereagh Street Sydney NSW

1

This unbelievably spacious studio apartment is located in the heart of the CBD with amazing views of the city skyline. Just moments to Museum train station, Hyde Park and all that the CBD has to offer this apartment is an absolute must to inspect!

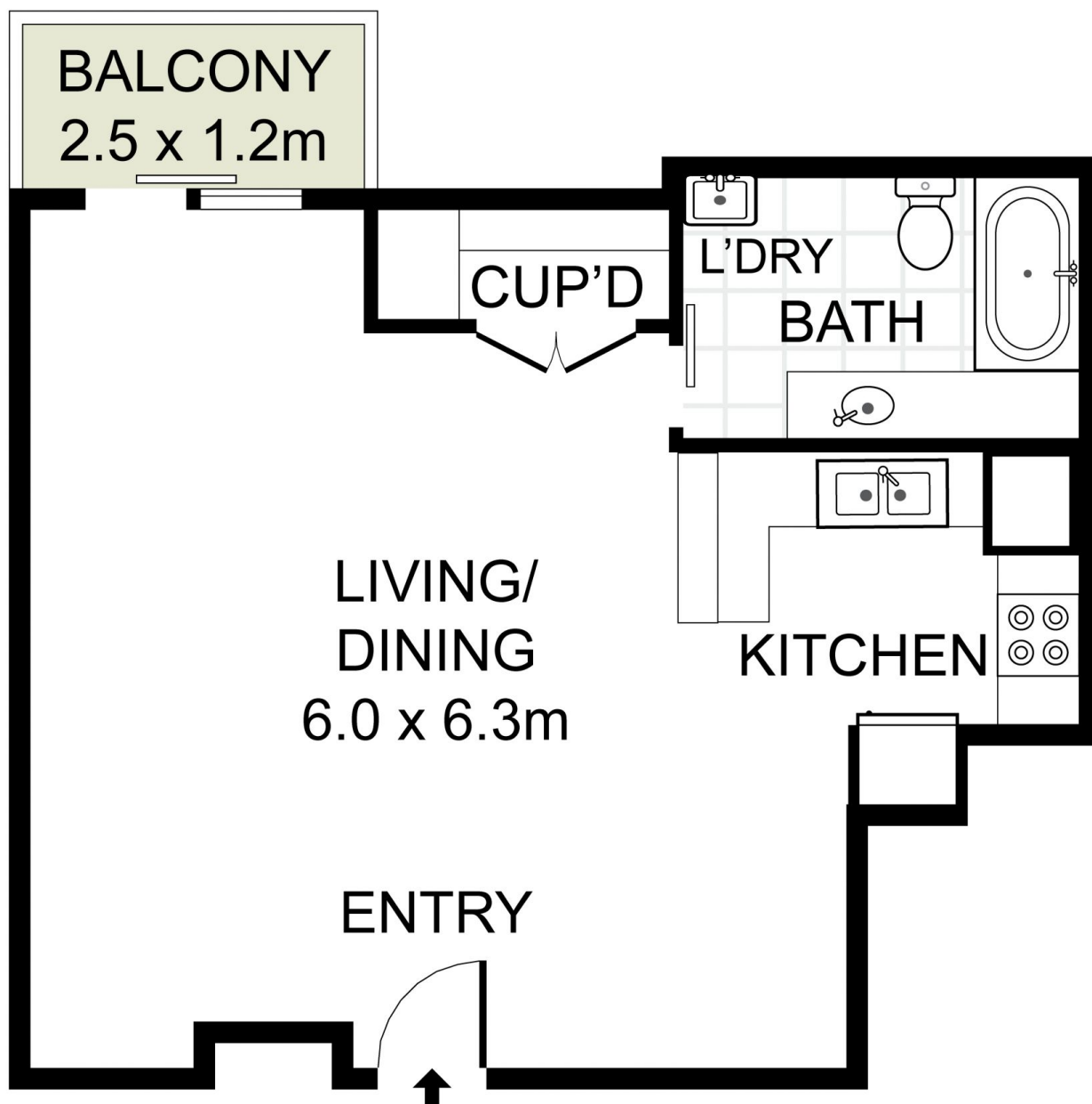
- = Spacious studio apartment
- = Updated tiled bathroom
- = Located on the twelfth floor with lift access
- = Stylish kitchen with gas cooking
- = Huge entertainer's balcony
- = Internal laundry with dryer
- = 24 hour onsite concierge

DISCLAIMER: This advertisement contains information provided by third parties. While all care is taken to ensure otherwise, True Property does not make any representation

Price : Under contract
Land Size : 45 sqm
View : <https://www.trueproperty.com.au/sale/nsw/sydney-city/sydney/residential/apartment/6846639>



Michael Catalano
8507 2444



true =
PROPERTY

1210/199 Castlereagh Street, Sydney

DISCLAIMER: PLANS SHOWN ARE FOR PRESENTATION PURPOSES AND ARE NOT PART OF ANY LEGAL DOCUMENT. ALL MEASUREMENTS AND FIGURES ARE APPROXIMATE.