



## 260 Great North Road WAREEMBA NSW

Available now = Located in the heart of Wareemba comes the opportunity to secure this large Factory Warehouse which has been home to the most iconic family business in the past. With a practical and unique floorplan, the opportunity to take advantage of this great amount of space exposure for your business will not last long.

### THE PROPERTY

- = Floor area approx. 200sqm
- = Practical layout with toilet facilities
- = Registered parking

### THE FEATURES

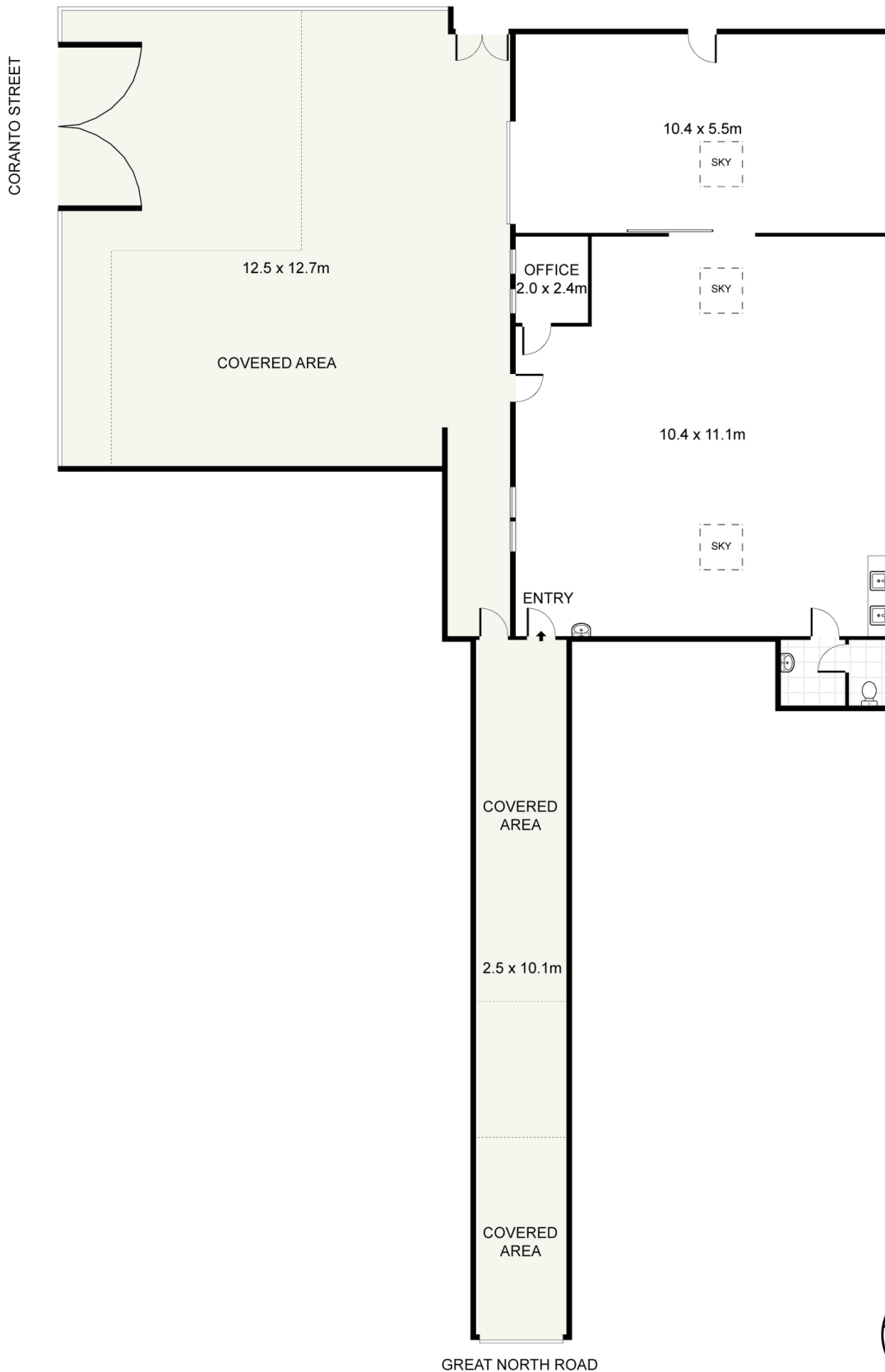
- = Great exposure to passing traffic
- = Air-conditioning

[For full version visit the website](https://www.trueproperty.com.au/lease/nsw/inner-west/wareemba/commercial/warehouse/7409738)

**Type** : Warehouse  
**Building Size** : 200 sqm  
**View** : <https://www.trueproperty.com.au/lease/nsw/inner-west/wareemba/commercial/warehouse/7409738>



**Michael Catalano**  
02 8507 2444



**true** =  
PROPERTY

260 Great North Road, Wareemba

INT: 181 m<sup>2</sup>  
EXT: 215 m<sup>2</sup>

DISCLAIMER: PLANS SHOWN ARE FOR PRESENTATION PURPOSES AND ARE NOT PART OF ANY LEGAL DOCUMENT. ALL MEASUREMENTS AND FIGURES ARE APPROXIMATE.