



23/143-145 Parramatta Road Concord NSW

2 1 1

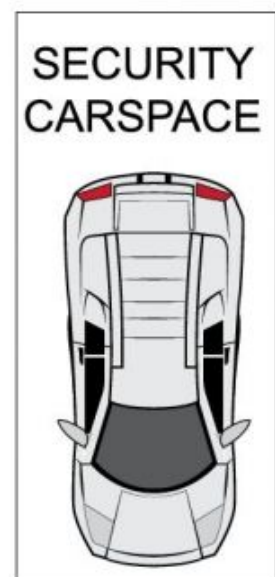
Boasting an ideal and central address, this spacious and practice floorplan is designed for easy living. Offering easy access to Strathfield train station and many other facilities to make every day living easy this definitely one not to be missed.

- = Two bedrooms, main with built-in wardrobe
- = One tiled bathroom
- = Registered security car space
- = Open plan living and dining leading out to a sundrenched balcony
- = Large kitchen with granite benches and stainless steel appliances
- = Split system air conditioning
- = Security building with lift access
- = Walking distance to shops, local schools and childcare centres and located close to Strathfield Station with a direct

View : <https://www.trueproperty.com.au/sale/nsw/inner-west/concord/residential/apartment/7682160>



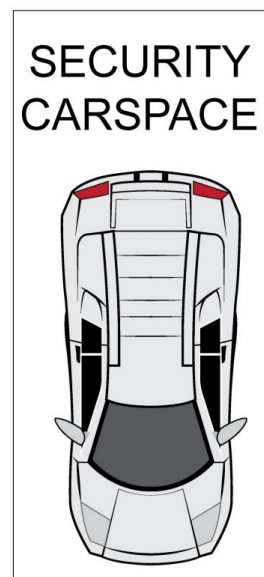
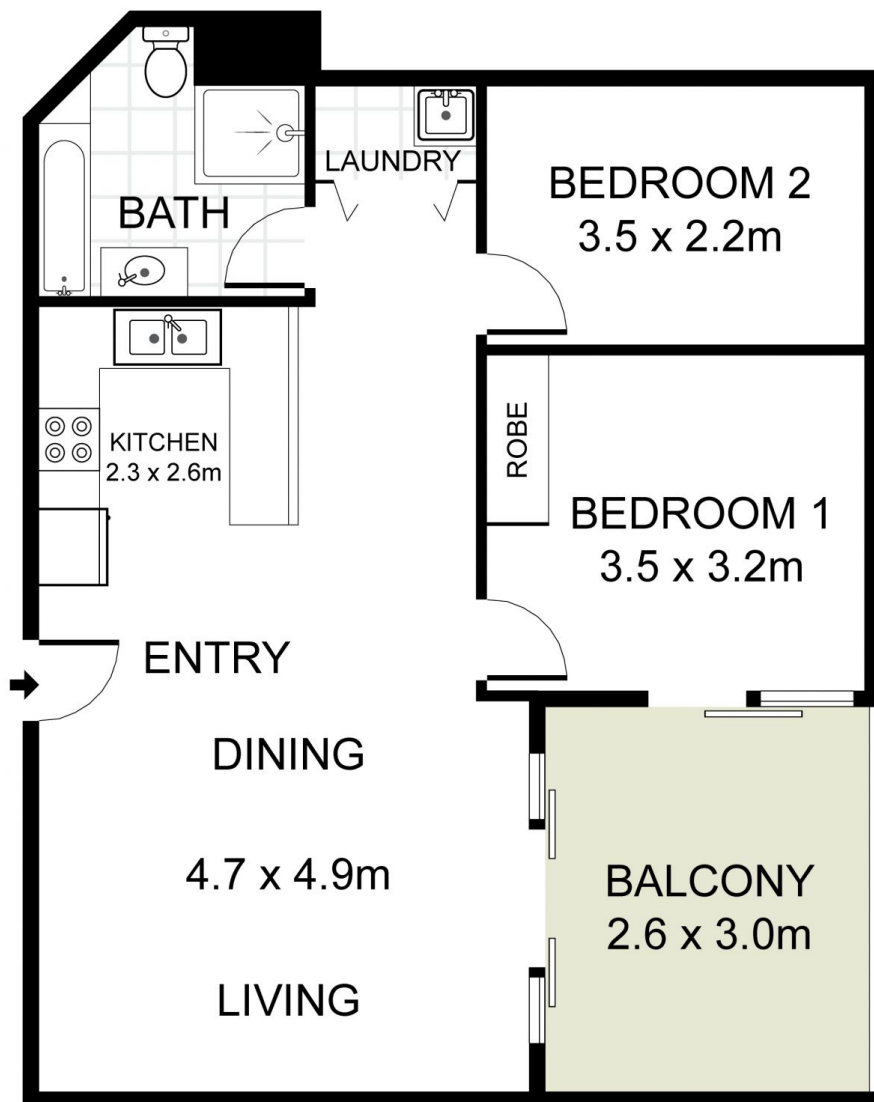
Michael Catalano
8507 2444



true = 23/143 Parramatta Road, Concord
PROPERTY

INT: 68 m²
EXT: 25 m²

DISCLAIMER: PLANS SHOWN ARE FOR PRESENTATION PURPOSES AND ARE NOT PART OF ANY LEGAL DOCUMENT. ALL MEASUREMENTS AND FIGURES ARE APPROXIMATE.



true =
PROPERTY

23/143 Parramatta Road, Concord

INT: 68 m²
EXT: 25 m²

DISCLAIMER: PLANS SHOWN ARE FOR PRESENTATION PURPOSES AND ARE NOT PART OF ANY LEGAL DOCUMENT. ALL MEASUREMENTS AND FIGURES ARE APPROXIMATE.