



5/145 Hampden Road Wareemba NSW

1 1 1

This one of a kind tri-level townhouse is definitely a rare gem. Set in one of the inner west's most sought after locations and within moments to endless eateries and specialty stores along with easy access to fantastic water surrounded parklands and easy access to the CBD this property is definitely one not to be missed.

- = Large main bedroom with built-in wardrobe
- = Second living or another bedroom located on the third level
- = Full bathroom with separate bath tub
- = Lock up garage with additional storage
- = Modern kitchen including dishwasher and ample cupboard space
- = Open lounge and dining area leading out to a private tranquil court yard
- = Internal laundry with second toilet and air-conditioning

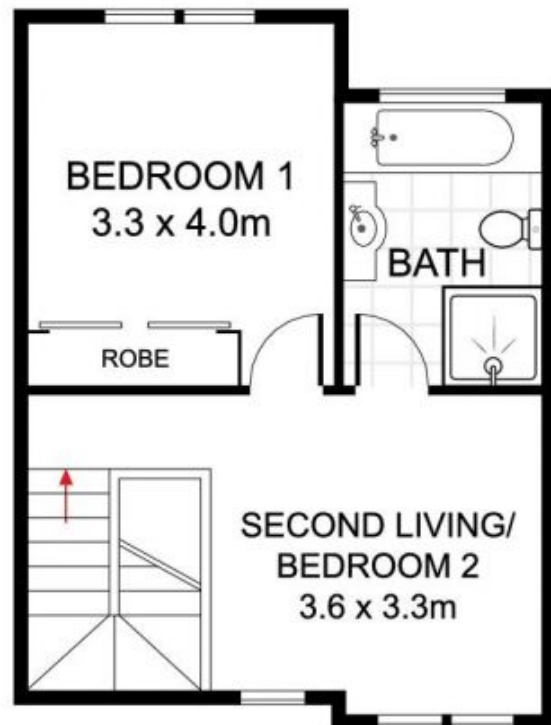
View : <https://www.trueproperty.com.au/sale/nsw/inner-west/wareemba/residential/townhouse/7682164>



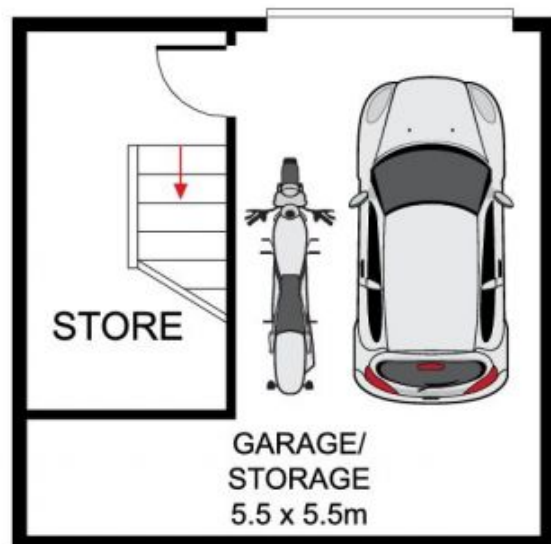
Michael Catalano
8507 2444



GROUND FLOOR



FIRST FLOOR



BASEMENT

true =
PROPERTY

5/145 Hampden Road, Abbotsford

INT: 113 m²

DISCLAIMER: PLANS SHOWN ARE FOR PRESENTATION PURPOSES AND ARE NOT PART OF ANY LEGAL DOCUMENT. ALL MEASUREMENTS AND FIGURES ARE APPROXIMATE.