



18 Roberts Street Camperdown NSW

2 1 1

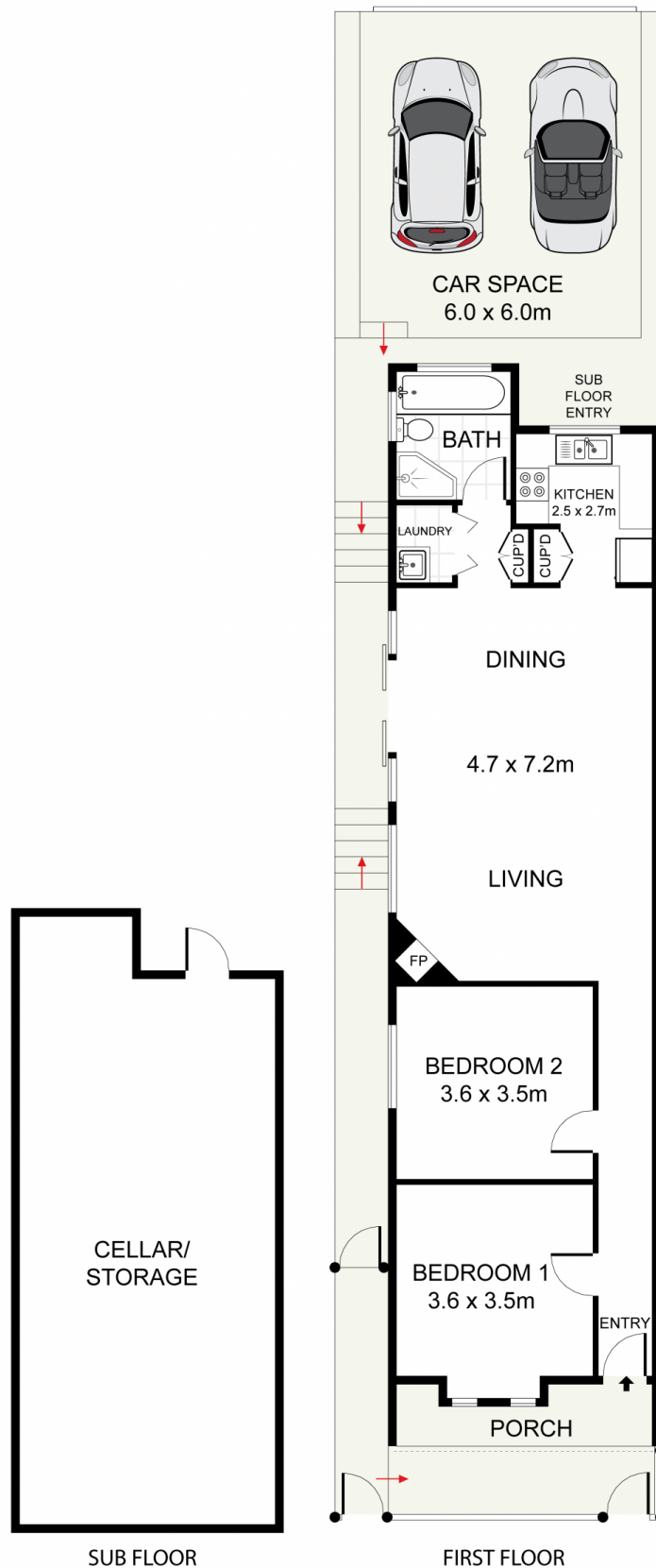
"MYOLA" Constructed and available for the first time to the public since 1903. Restored in 2004 and located in one of Camperdown's most exclusive and desirable streets, this traditional two bedroom home exudes charm and style and yet it is a moments walk to CBD transport, RPA Hospital, The Sydney University Precinct and Camperdown Memorial Rest Park.

- = Modern gourmet granite kitchen with dishwasher and stainless steel appliances
- = Cedar timber windows and doors throughout
- = High ornate ceilings and gleaming polished timber floorboards throughout
- = Rear lane access to automatic garage and entertainer's courtyard
- = Open plan living and dining including working gas fireplace

Land Size : 164 sqm
View : <https://www.trueproperty.com.au/sale/nsw/inner-west/camperdown/residential/house/7682170>



Michael Catalano
8507 2444



true =
PROPERTY

18 Roberts Street, Camperdown

DISCLAIMER: PLANS SHOWN ARE FOR PRESENTATION PURPOSES AND ARE NOT PART OF ANY LEGAL DOCUMENT. ALL MEASUREMENTS AND FIGURES ARE APPROXIMATE.