



226/268 Pitt Street Waterloo NSW

2 2 1

A contemporary development set in the area's most desirable suburb, this faultless City-Fringe home is the perfect offering for an easy-care and convenient lifestyle. Bathed in natural light the home's crisp interiors and effortless floor plan ensure a stylish and relaxed atmosphere. Ideally located just a stone's throw to Waterloo's diverse range of trendy cafes, supermarkets and lifestyle facilities

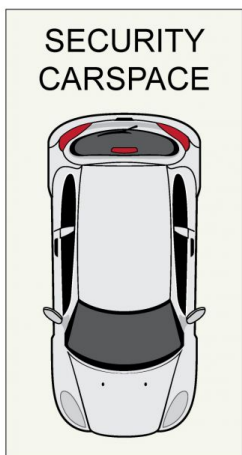
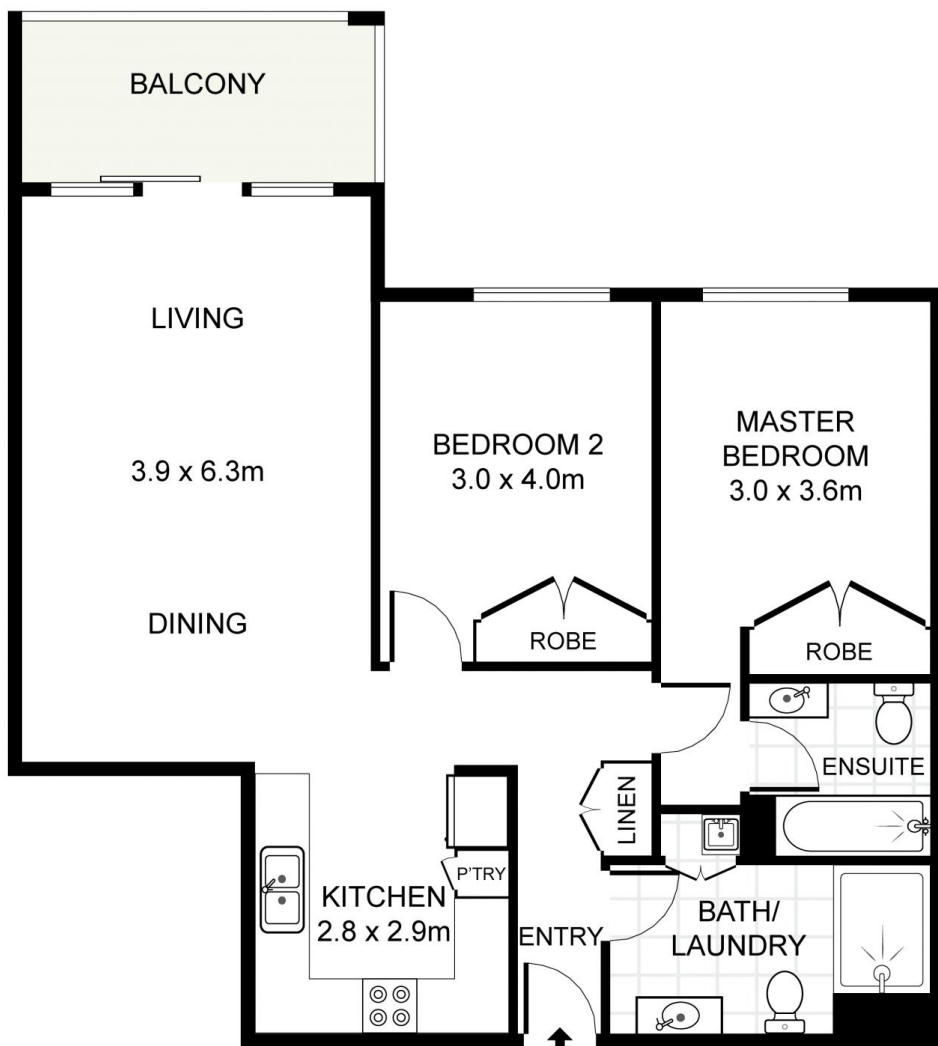
- = Two large bedrooms, both with mirrored built in wardrobes
- = Two modern tiled bathroom
- = One security carspace
- = Gourmet gas kitchen with dishwasher, ample storage and plenty of bench space
- = Large open plan living leading to entertainer's balcony which is bathed in natural sunlight

Land Size : 85 sqm

View : <https://www.trueproperty.com.au/sale/nsw/eastern-suburbs/waterloo/residential/apartment/7682182>



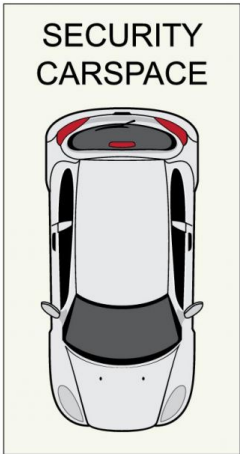
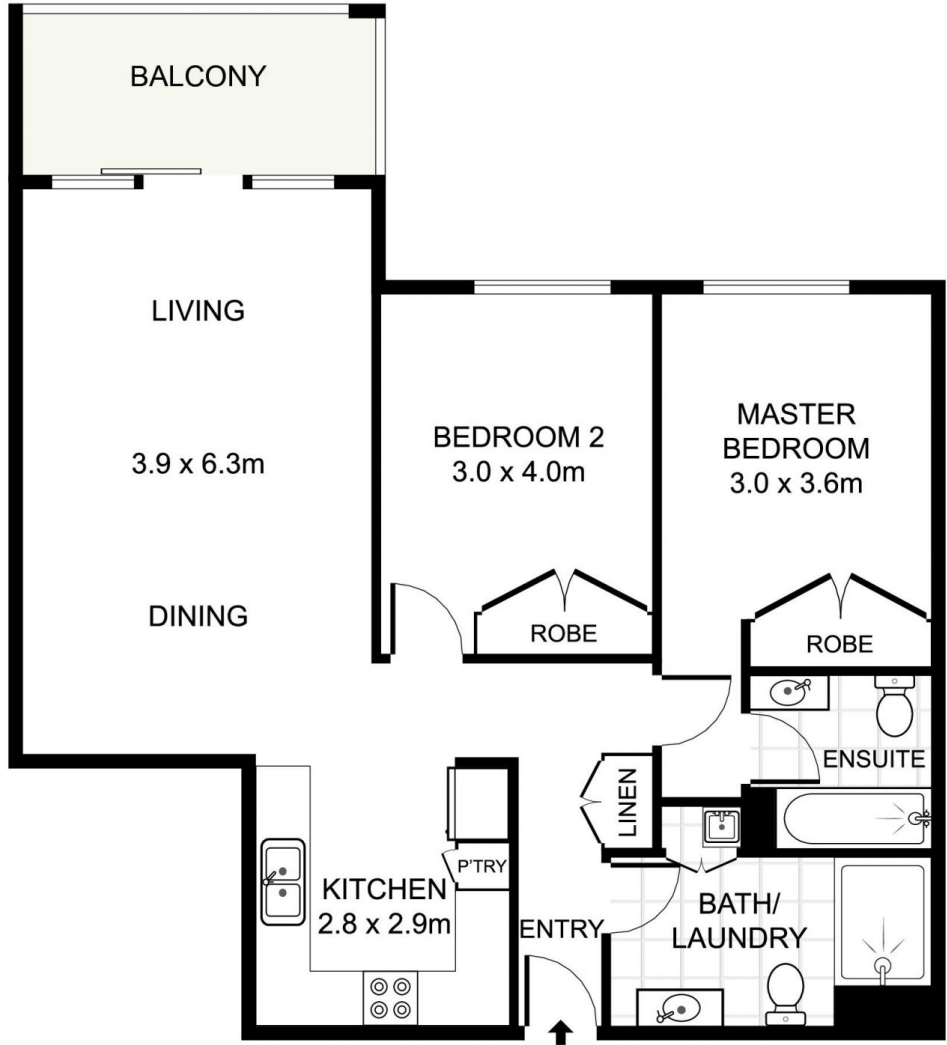
Michael Catalano
8507 2444



true =
PROPERTY

226/25-33 Allen Street, Waterloo

DISCLAIMER: PLANS SHOWN ARE FOR PRESENTATION PURPOSES AND ARE NOT PART OF ANY LEGAL DOCUMENT. ALL MEASUREMENTS AND FIGURES ARE APPROXIMATE.



true =
PROPERTY

226/25-33 Allen Street, Waterloo

DISCLAIMER: PLANS SHOWN ARE FOR PRESENTATION PURPOSES AND ARE NOT PART OF ANY LEGAL DOCUMENT. ALL MEASUREMENTS AND FIGURES ARE APPROXIMATE.