



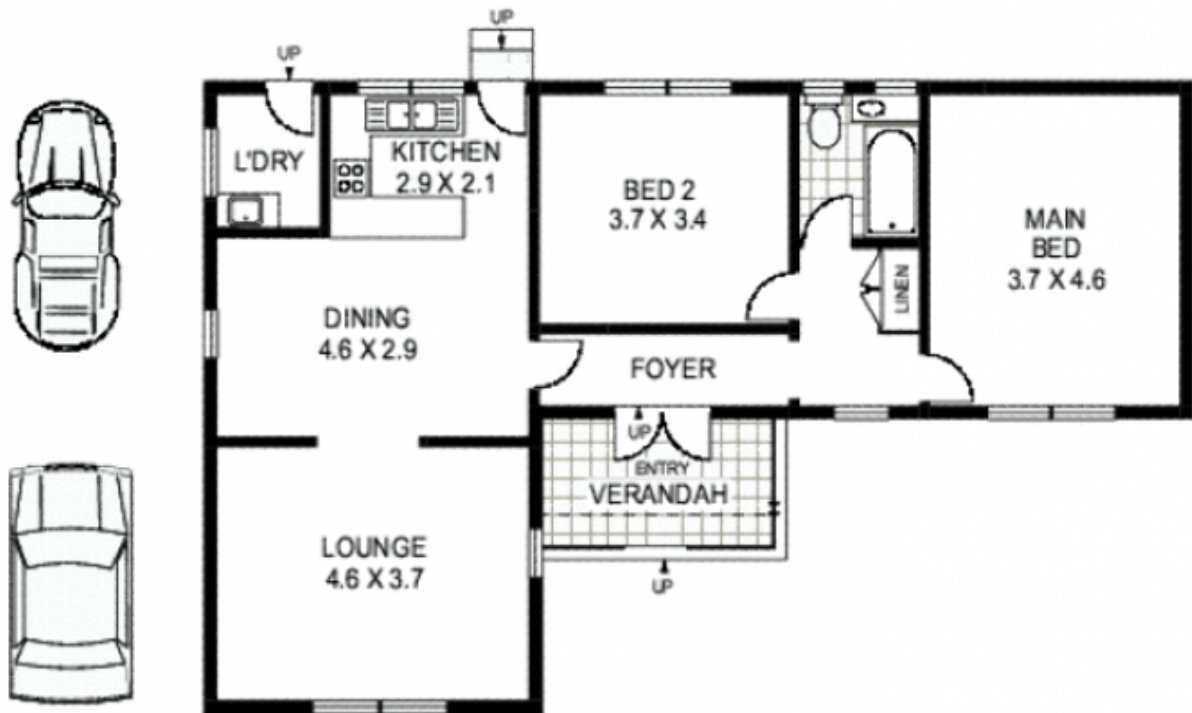
2A Tyler Crescent ABBOTSFORD NSW

2 1 2

Offering a sensational opportunity to acquire a quality post WW2 freestanding home in this highly sort after locale, nestled on a large block with a peaceful, airy and leafy outlook. Potential to create a second level and capture views over Campbell Park and Five Dock Bay, makes this property a great investment as well as a perfect family home.

Land Size : 499 sqm
View : <https://www.trueproperty.com.au/sale/nsw/inner-west/abbotsford/residential/house/768222>

Large bedrooms, formal lounge and dining room
Polished floorboards throughout, period kitchen and bathroom
Open living area drenched in natural light
Solid, freestanding double brick home on approx 500sqm
Off street parking for multiple cars
Grassed lawn areas and paved courtyard at the rear
Short stroll to the water and local parks
Close to bus and ferry transport



2A TYLER CRESCENT

ABBOTSFORD

Floor Plan Disclaimer: Mind the Gap (mtg) floor plans / site plans are intended as a guide only. No representations or warranties of any nature whatsoever are given or intended and any person using this information should always rely on their own enquiries. mtg property marketing services - 1300 133 145 - photography, floor plans, virtual tours, video tours, copywriting, project marketing - www.mindthegap.com.au