

## 17 FISHERS RESERVE PETERSHAM NSW

3 2 1

This luxurious terrace boasts contemporary finishes, sophisticated design and only footsteps from popular restaurants, cafes and shops. Only 12 years young means this terrace will stand strong for years to come and is perfect for the growing family.

**Land Size** : 237 sqm  
**View** : <https://www.trueproperty.com.au/sale/nsw/inner-west/petersham/residential/house/7682226>

Expansive and separate living, dining and casual living rooms

Generous sized modern kitchen with stainless steel appliances

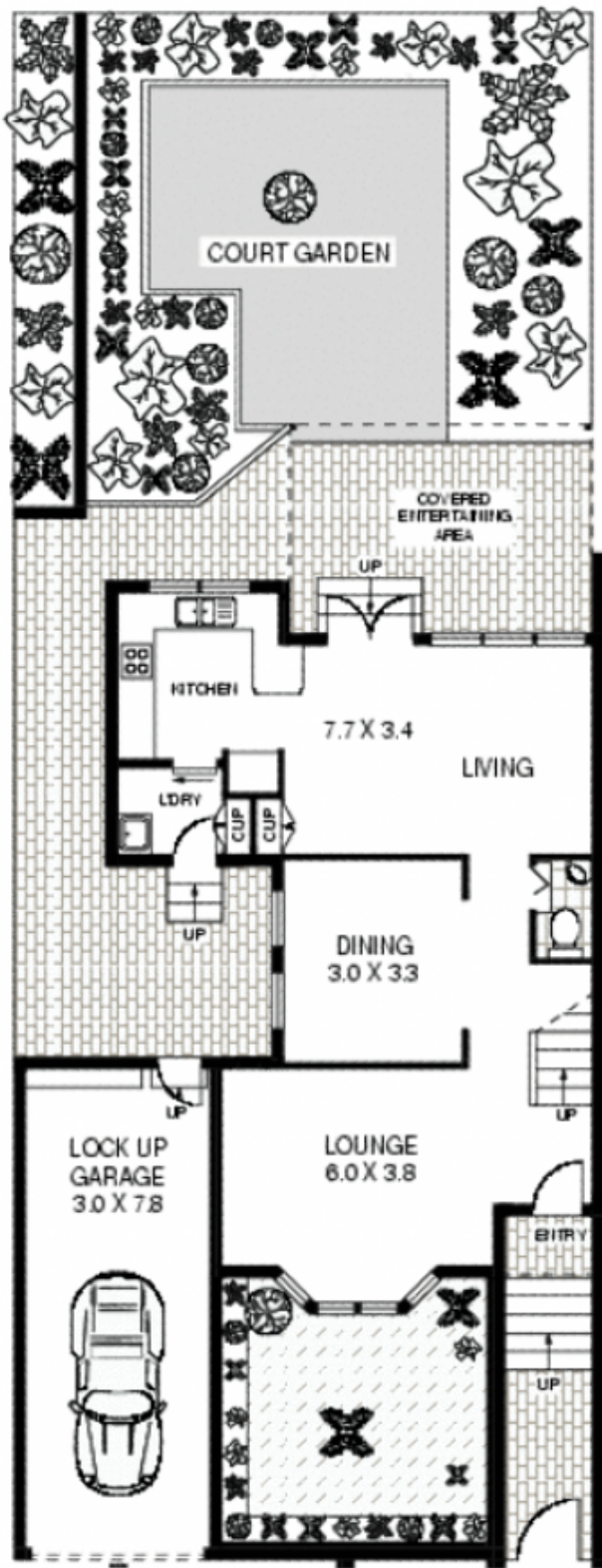
Main bedroom bathed in light, en-suite, walk in wardrobes and two balconies

Polished timber floors, high ceilings, full security system

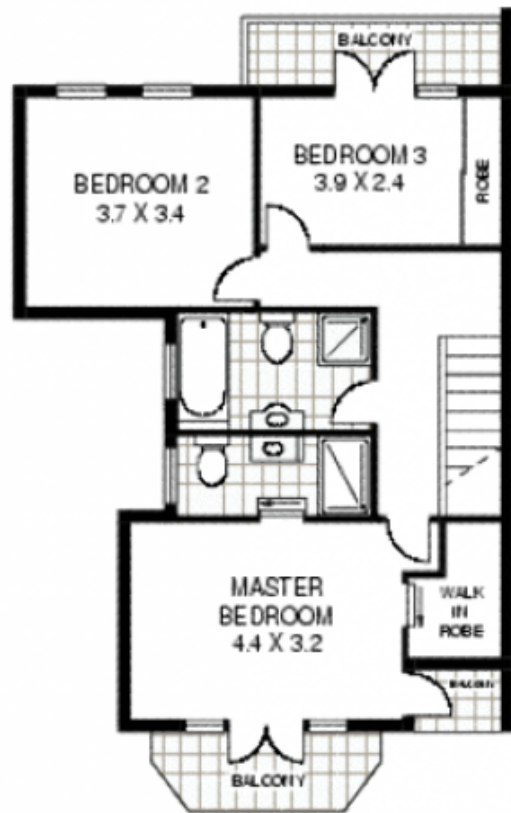
Peaceful rear alfresco courtyard enjoys an abundance of sunshine

Bright casual space/family room flowing to the outdoors

Spacious garage with auto door and internal access



GROUND FLOOR



FIRST FLOOR

APPROX : GROSS INTERNAL AREA :- 151 SQM



17 FISHER RESERVE

PETERSHAM

Floor Plan Disclaimer : Mind the Gap (mtg) floor plans / site plans are intended as a guide only. No representations or warranties of any nature whatsoever are given or intended and any person using this information should always rely on their own enquiries. mtg property marketing services - 1300 133 145 - photography, floor plans, virtual tours, videotours, copywriting, project marketing - www.mindthegap.com.au