



43/187 CLEVELAND Street REDFERN NSW

2 2 1

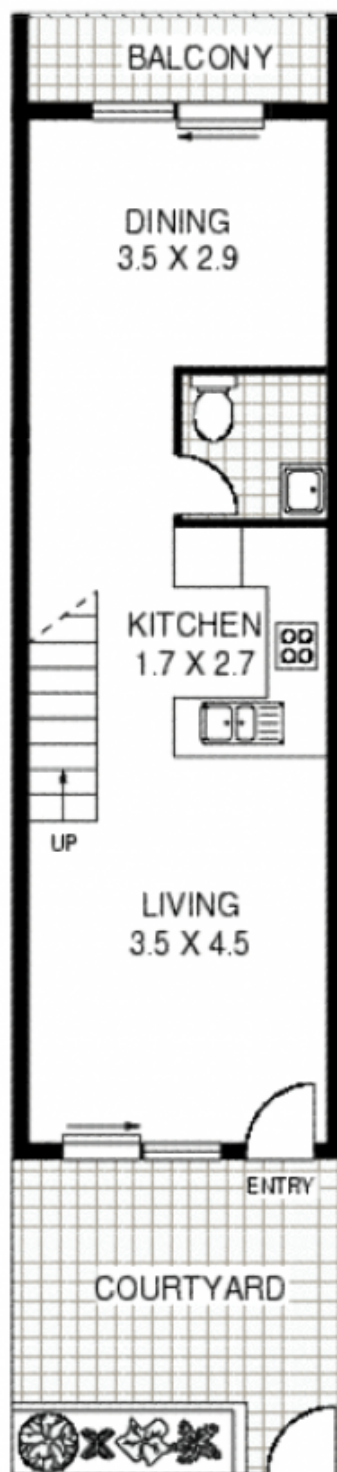
Quietly nestled in a private leafy locale, this two level townhouse offers large bedrooms, built in wardrobes, off street parking and potential to re-decorate and create more value.

Located moments from transport, cafes, restaurants and The Seymour Theatre. You can stroll across to Prince Alfred Park for a swim or other leisure activities.

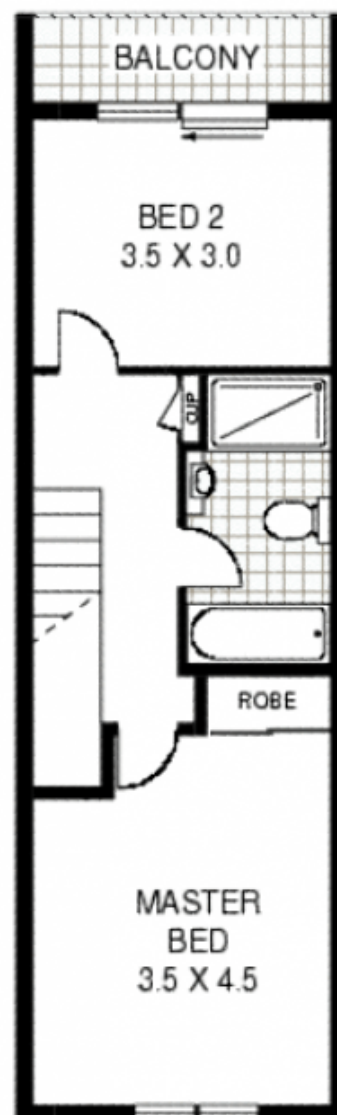
Set off the street makes it secure and private as you enter from George Street. Internal access from the car parking is also secured.

The townhouse dedicates the ground level to living and entertaining with two separate living areas that flow to a courtyard and verandah. Upstairs, you find the bedrooms and the main bathroom. The second bedroom has a small

Building Size : 13 sqm
View : <https://www.trueproperty.com.au/sale/nsw/eastern-suburbs/redfern/residential/townhouse/7682227>



GROUND FLOOR



FIRST FLOOR



43/187 CLEVELAND STREET

REDFERN

Floor Plan Disclaimer: Mind the Gap (mtg) floor plans / site plans are intended as a guide only. No representations or warranties of any nature whatsoever are given or intended and any person using this information should always rely on their own enquiries. mtg property marketing services - 1300 133 145 - photography, floor plans, virtual tours, videotours, copywriting, project marketing - www.mindthegap.com.au