



## 26 PARKHAM Street SURRY HILLS NSW

4  1  1 

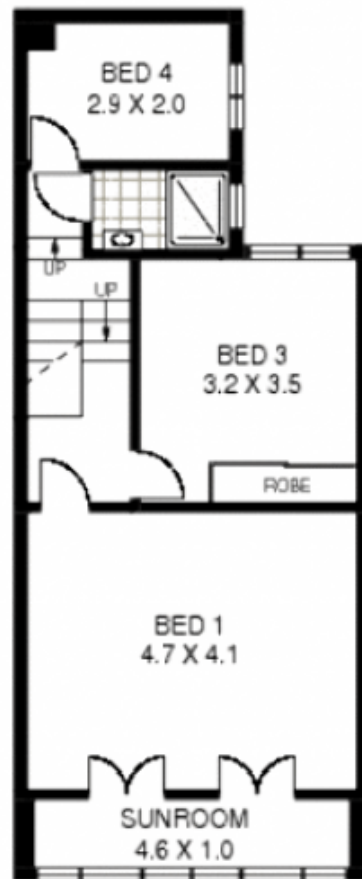
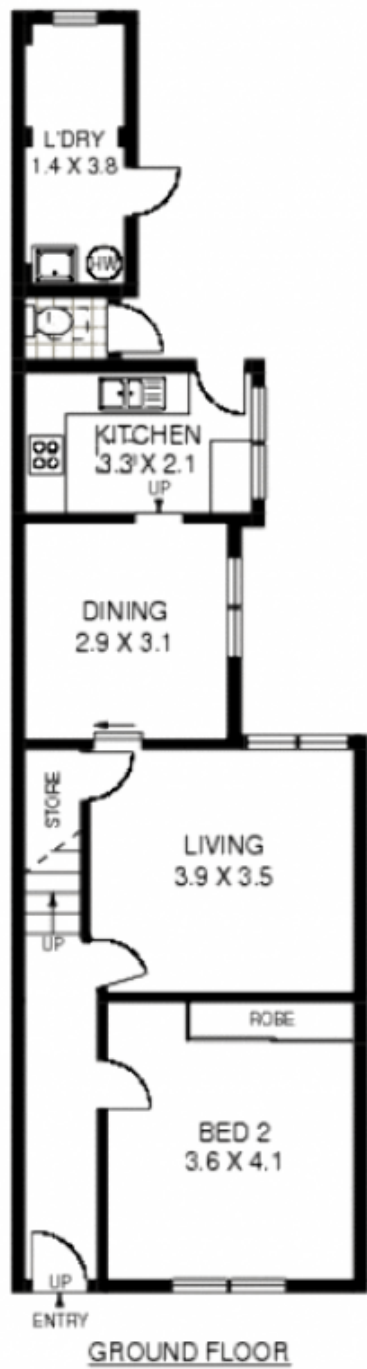
Secluded and conveniently located in a very quiet and leafy street, this two level terrace offers exciting potential to re-create a gorgeous home only moments to all amenities.

Enjoying many famous bakeries, cafe's and restaurants only minutes walk away, this currently four bedroom terrace has endless possibilities so you can re-create it the way you want it or move straight in.

Held in the same family for more than 45 years, it is obviously the perfect place to bring up your family while enjoying the convenience of 5 minutes drive to work in the city.

**View** : <https://www.trueproperty.com.au/sale/nsw/eastern-suburbs/surry-hills/residential/house/7682230>

- \* Secured off street parking via rear lane
- \* Large main bedrooms
- \* Over-sized master bedroom with sunroom/balcony
- \* Leafy district outlook from windows
- \* Separate toilet and laundry



26 PARKHAM STREET

SURRY HILLS

Floor Plan Disclaimer: Mind the Gap (mtg) floor plans / site plans are intended as a guide only. No representations or warranties of any nature whatsoever are given or intended and any person using this information should always rely on their own enquiries. mtg property marketing services - 1300 133 145 - photography, floor plans, virtual tours, video tours, copywriting, project marketing - www.mindthegap.com.au