



10/187 CLEVELAND Street REDFERN NSW

2 1 1

SOLD SOLD SOLD SOLD SOLD SOLD

Located on the first floor and looking straight down over Prince Alfred Park, this two bedroom corner apartment is perfect for the inner city haven or as a solid investment. Being only 5 minutes walk to Central Station, 8 minutes to Sydney University and close to all amenities you cannot miss this wonderful opportunity.

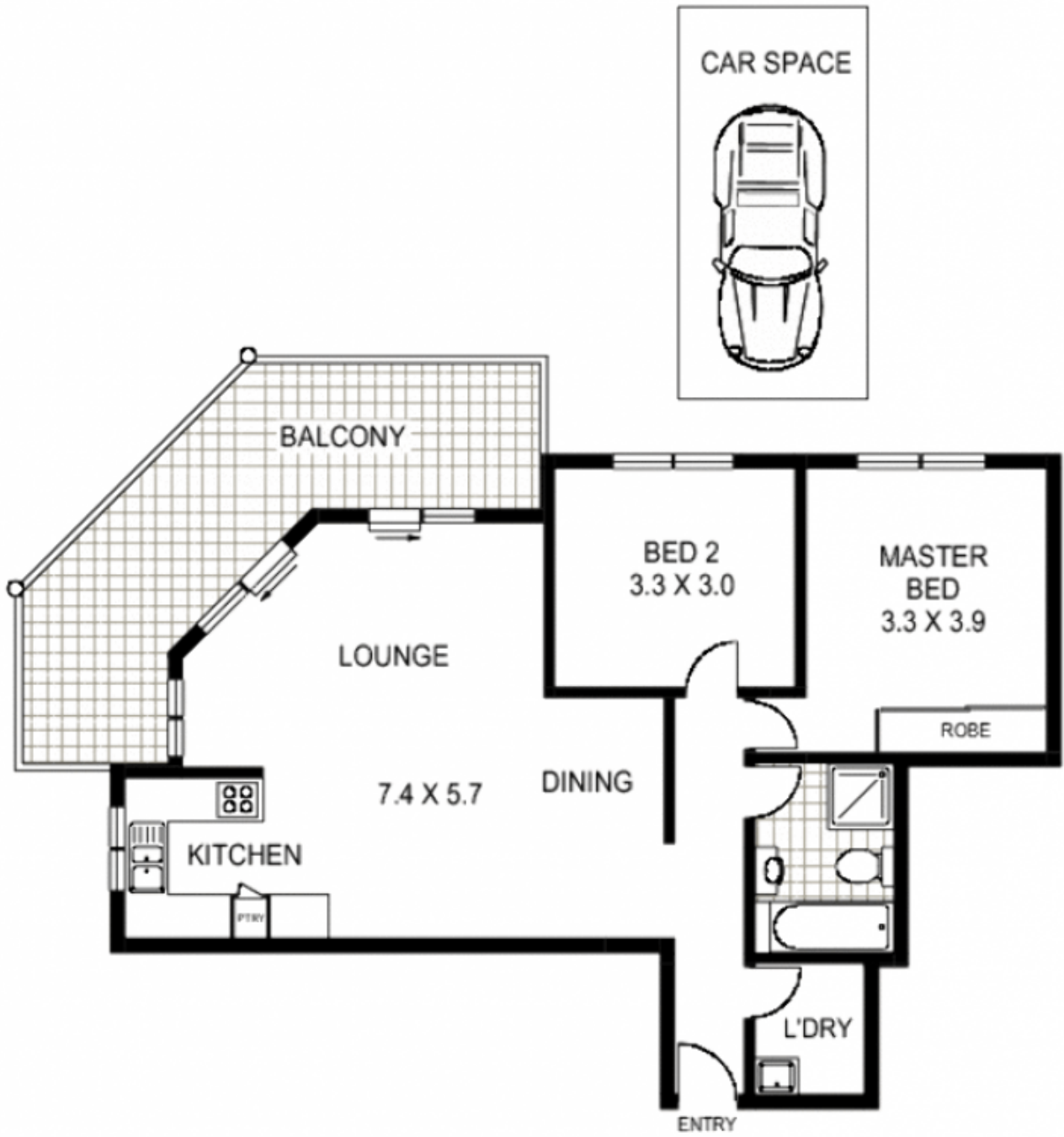
The open plan living area flows to the large wrap around balcony that looks down to the park, the bedrooms are on the quiet side overlooking George Street. The building is secured and the car parking has all internal access from underneath. The apartment could benefit from a new coat of paint and new carpets, meaning lots of value to add with minimal input.

This is a highly sought after building so do not miss out!

* Building was completed in February 2000

Building Size : 10 sqm

View : <https://www.trueproperty.com.au/sale/nsw/eastern-suburbs/redfern/residential/apartment/7682231>



NOTE:- SECURE UNDER GROUND CAR SPACE



10/187 CLEVELAND STREET

REDFERN

Floor Plan Disclaimer: Mind the Gap (mtg) floor plans / site plans are intended as a guide only. No representations or warranties of any nature whatsoever are given or intended and any person using this information should always rely on their own enquiries. mtg property marketing services - 1300 133 145 - photography, floor plans, virtual tours, video tours, copywriting, project marketing - www.mindthegap.com.au