



4/66 Hampden Road RUSSELL LEA NSW

2  2  2 

SOLD SOLD SOLD

Nestled in amongst the landscaped gardens, this three level townhouse is perfect for up sizing from a small apartment, downsizing from your large house or expanding your investment portfolio.

The entry level features an open plan living and dining area that flows out onto the courtyard that is drenched in the morning and lunchtime sun. (The entry level also features the kitchen, powder room and the stairs down to the over sized garage and storeroom).

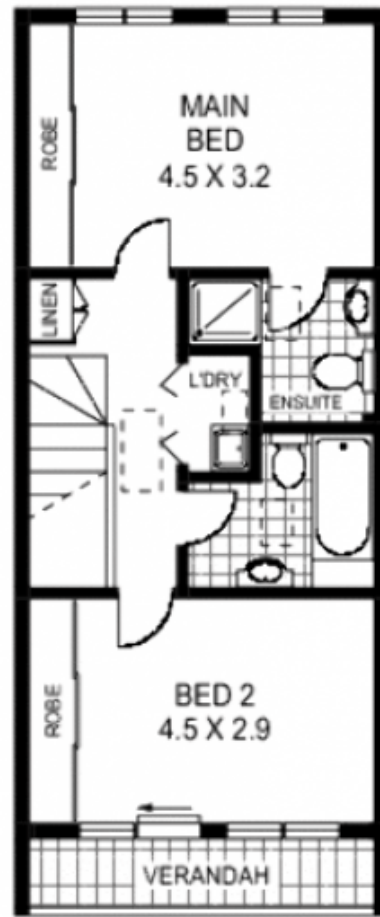
Set back from the street, this townhouse is whisper quiet. Relax in your private courtyard or retire to the comfort of reverse cycle airconditioning throughout.

Recently repainted, move straight in to this low maintenance townhouse or take advantage of the rental market to maximise your returns.

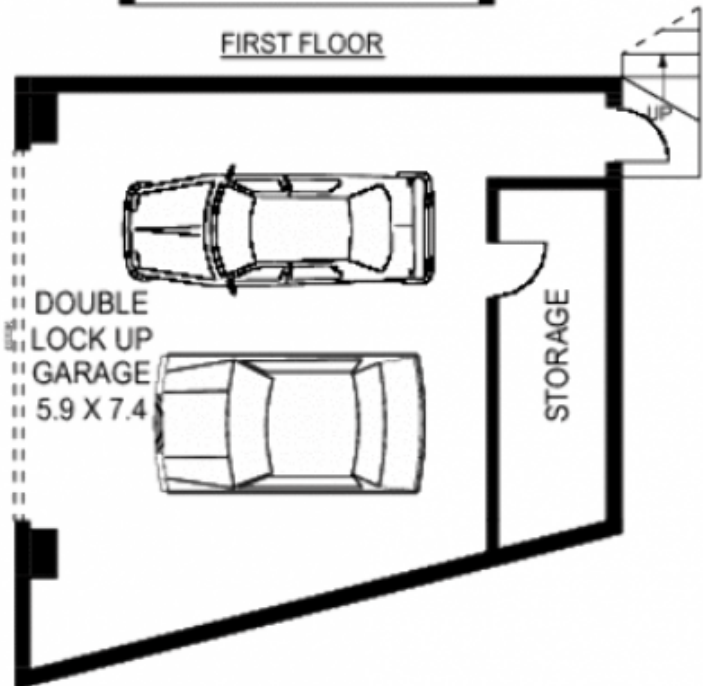
Price : \$ 580,000

Building Size : 20 sqm

View : <https://www.trueproperty.com.au/sale/inner-west/russell-lea/residential/townhouse/7682239>



FIRST FLOOR



LOWER GROUND FLOOR



4/66 HAMPDEN ROAD

RUSSELL LEA

Floor Plan Disclaimer: Mind the Gap (mtg) floor plans / site plans are intended as a guide only. No representations or warranties of any nature whatsoever are given or intended and any person using this information should always rely on their own enquiries. mtg property marketing services - 1300 133 145 - photography, floor plans, virtual tours, video tours, copywriting, project marketing - www.mindthegap.com.au