



1 minute stroll to this

## Unit 52/1 JUNIPER Drive BREAKFAST POINT NSW

2 2 1

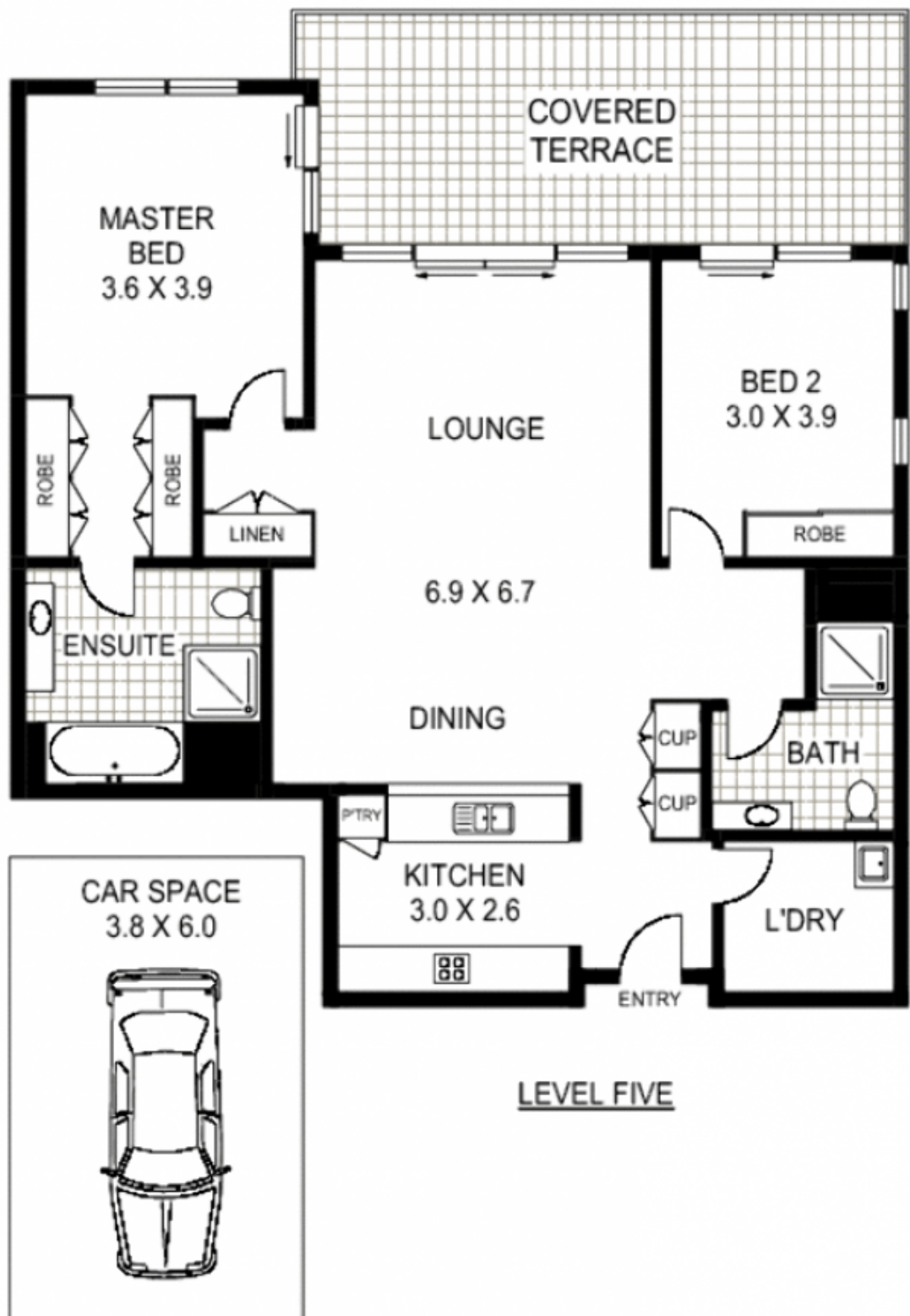
STUNNING TOP FLOOR APARTMENT IN BREAKFAST POINT'S "CHATEAUX".

Entertainers open plan kitchen, living and dining lead to huge private terrace complete with water and district views.

- State of the art kitchen with Miele appliances and Caesar-stone bench tops
- Generous bedrooms, master with walk through wardrobes and en-suite
- Ducted air conditioning throughout
- Security video intercom, lift access, over sized security parking space
- Moments to waterfront and local parklands.
- Resort facilities include: Country Club with tennis courts, pool, gymnasium, golf chipping green, cricket ground, restaurant and bar.
- Supermarket, shops and a cafe only a short stroll away.

**Building Size** : 1 sqm

**View** : <https://www.trueproperty.com.au/sale/inner-west/breakfast-point/residential/apartment/7682241>



LEVEL FIVE



52/1 JUNIPER DRIVE

BREAKFAST POINT

**Floor Plan Disclaimer:** Mind the Gap (mtg) floor plans / site plans are intended as a guide only. No representations or warranties of any nature whatsoever are given or intended and any person using this information should always rely on their own enquiries. mtg property marketing services - 1300 133 145 - photography, floor plans, virtual tours, video tours, copywriting, project marketing - www.mindthegap.com.au