



13 KINGSTON Road CAMPERDOWN NSW

3 1 2

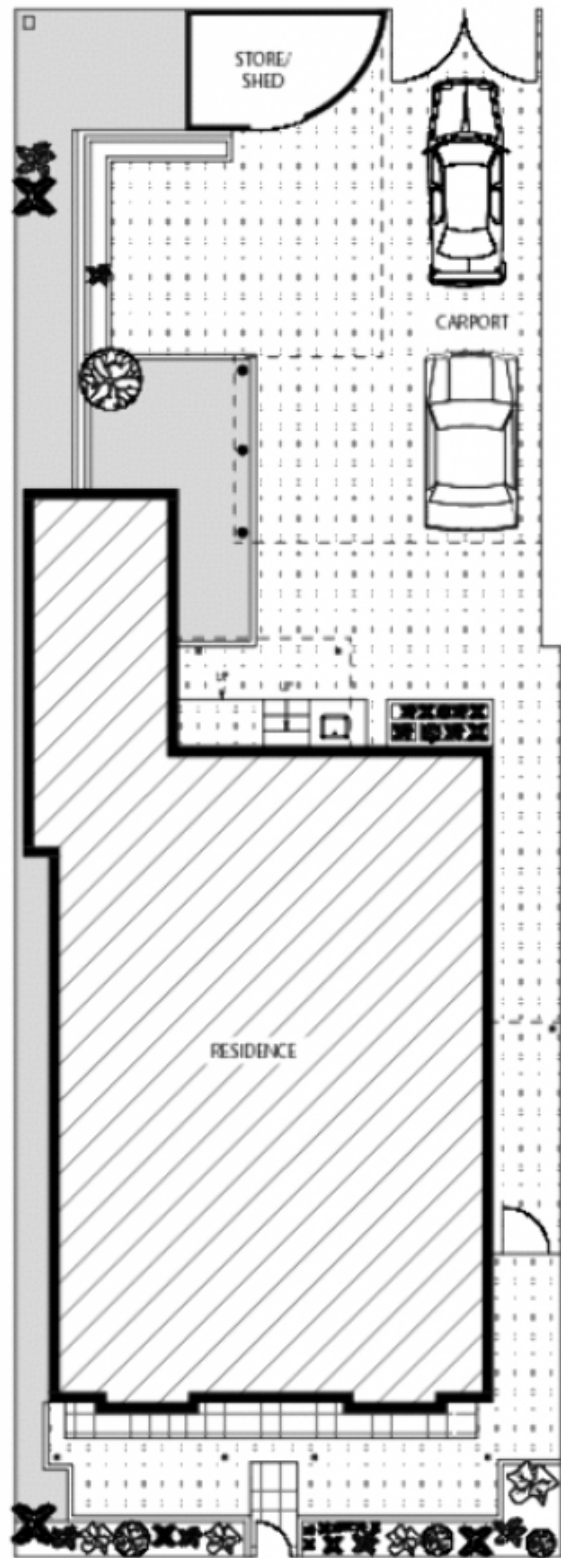
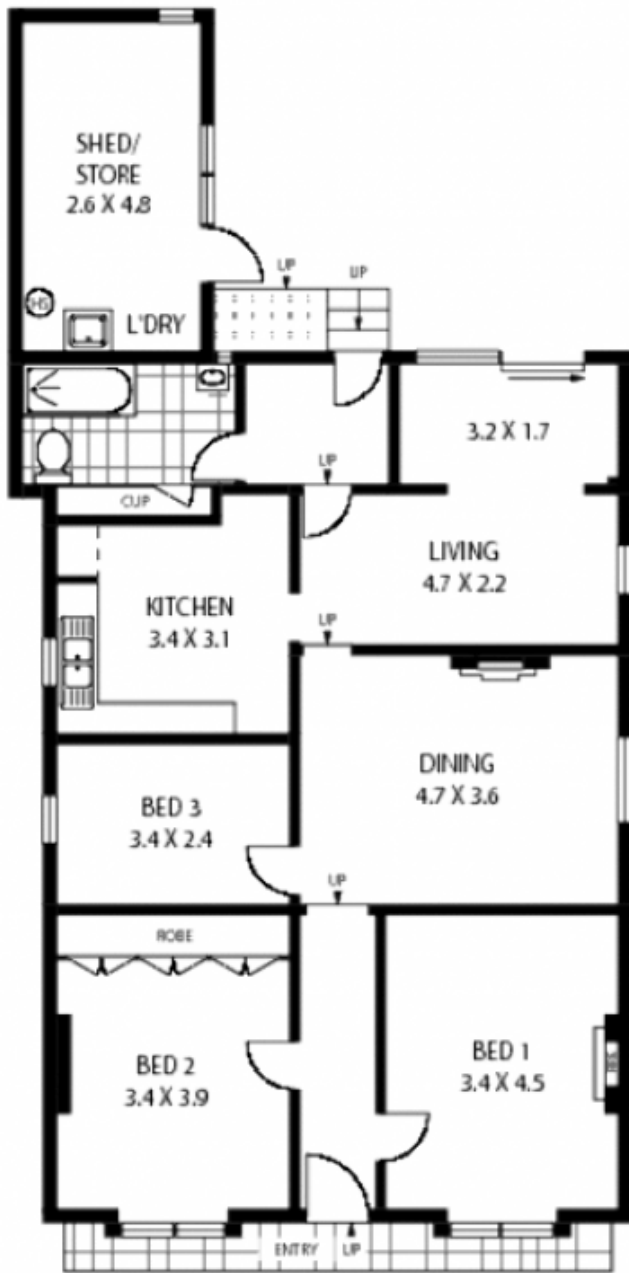
SOLD ABOVE RESERVE

This basic freestanding double brick residence holds immense potential for keen renovators who are ready to showcase their skills. Add value, create your dream living space and capitalise on a sought-after setting in the heart of the Camperdown.

Land Size : 310 sqm

View : <https://www.trueproperty.com.au/sale/nsw/inner-west/camperdown/residential/house/7682254>

- * Three double bedrooms
- * Double block totalling approx 310sqm (10.36 x 30.48)
- * Gated rear lane access for multiple cars
- * Flowing interiors allowing for great living areas
- * First time offered in over 40 years
- * Move in or create a stunning family home
- * Federation period features throughout
- * High ceilings, ceiling roses and ornate fireplaces
- * Gas cooking, air conditioning
- * Moments to city transport



SITE PLAN



13 KINGSTON ROAD

CAMPERDOWN

***Disclaimer:** mtg - mind the gap floor plans & site plans are intended as a guide only. Individuals **should always** rely on their own enquiries for exact measurements and no warranties are intended or given. **Please Note:** Any internal area measurement total that may be included does not include any void spaces or robes. Any external area measurement total that may be included does not include the total site plan area (ie total grounds and garden areas). mtg - mind the gap - 1 300 133 145 - www.mindthegap.com.au