



Unit 25/143 PARRAMATTA Road CONCORD NSW

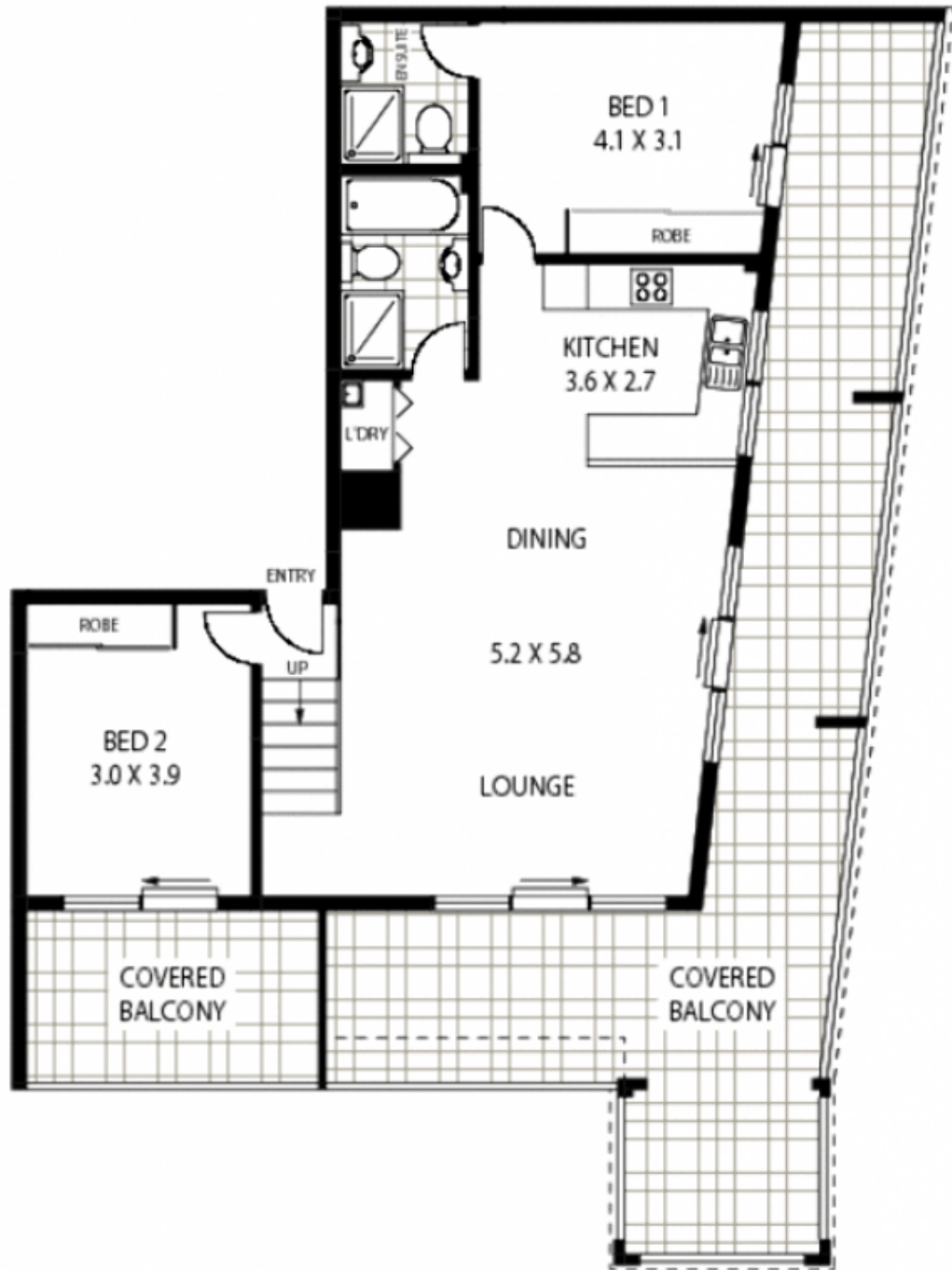
2 🛏 2 🚿 2 🚗

| SOLD IN 1 DAY BY LEIGHTON WALTERS |

Nestled on the doorstep of Strathfield and Concord lies this over-sized, split level apartment boasting two double bedrooms both with built in wardrobes, two large bathrooms with separate bath/shower and two secure car spaces. With an extensive wrap around sun drenched balcony/entertainment area off all bedrooms and living areas this property represents value at a huge 158sqm. Other features include:

- Modern kitchen with gas appliances and integrated dishwasher
- Air conditioning throughout
- Positioned in an ideal location with easy access to city or western suburbs
- Current investment return of \$450 per week

Building Size : 2 sqm
View : <https://www.trueproperty.com.au/sale/inner-west/concord/residential/unit/76>
82266



LEVEL TWO



25/143 PARRAMATTA ROAD

CONCORD

***Disclaimer:** mtg - mind the gap floor plans & site plans are intended as a guide only. Individuals **should always** rely on their own enquiries for exact measurements and no warranties are intended or given. **Please Note:** Any internal area measurement total that may be included does not include any void spaces or recesses. Any external area measurement total that may be included does not include the total site plan area (ie total grounds and garden areas). mtg - mind the gap - 1 300 133 145 - www.mindthegap.com.au