



Unit 307/34 Wentworth Street GLEBE NSW

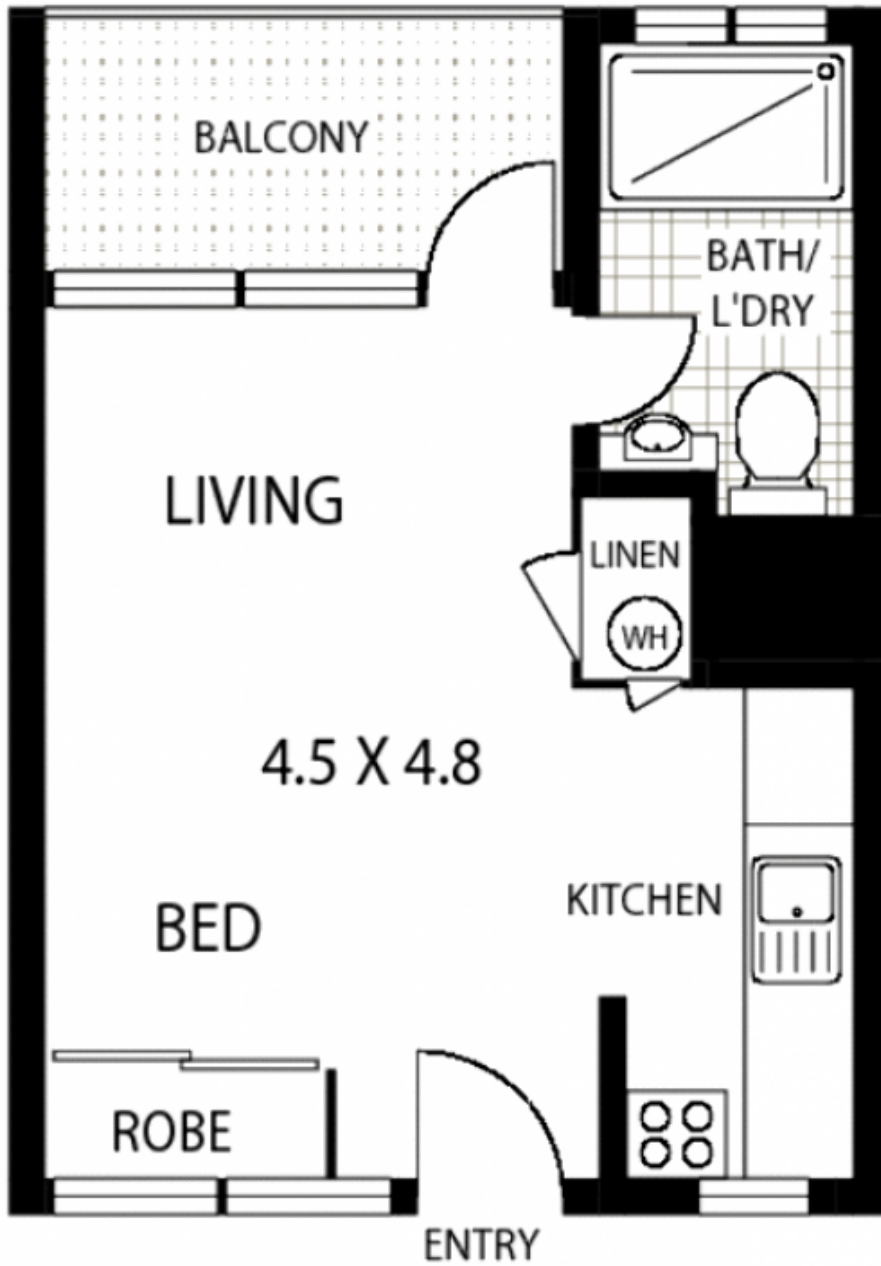
SOLD BY LEIGHTON WALTERS

Nestled on the doorstep of the Sydney CBD lies this stunning studio apartment. Perfect as a bachelor pad or ideal investment this comfortable studio is fitted with in-ceiling surround sound speakers, remote control lighting and built in wardrobes. Relax and absorb gorgeous views from your own private balcony overlooking Wentworth Park with the picturesque backdrop of the Sydney skyline. Other features include:

- City and park views
- Surrounded by the famous Sydney Fish Markets, Broadway Shopping Centre, Glebe shopping precinct and local schools and universities
- Fully air-conditioned
- Halogen downlights
- Polished timber floorboards



View : <https://www.trueproperty.com.au/sale/nsw/inner-west/glebe/residential/studio/7682268>



LEVEL THREE



307/34 WENTWORTH STREET

GLEBE

***Disclaimer:** mtg - mind the gap floor plans & site plans are intended as a guide only. Individuals **should always** rely on their own enquiries for exact measurements and no warranties are intended or given. **Please Note:** Any internal area measurement total that may be included does not include any void spaces or recesses. Any external area measurement total that may be included does not include the total site plan area (ie total grounds and garden areas). mtg - mind the gap - 1 300 133 145 - www.mindthegap.com.au