



6/268 Johnston Street Annandale NSW

1 1 1

Tastefully updated offering an abundance of natural light, practical layout, and conveniently located in a quiet and sought after complex in the heart of Annandale. With easy access to highly respected schools, public transport, fantastic cafes and the nearby Jubilee Park and Tramsheds, Annandale is undoubtedly one of the most sought after inner west hubs for all professional couples or singles.

- = One good sized bedroom with built-in wardrobe
- = Updated timber kitchen with ample storage
- = Large open plan living and dining
- = Sun-drenched balcony with leafy views
- = Security parking located on the same level as the apartment

[For full version visit the website](https://www.trueproperty.com.au)

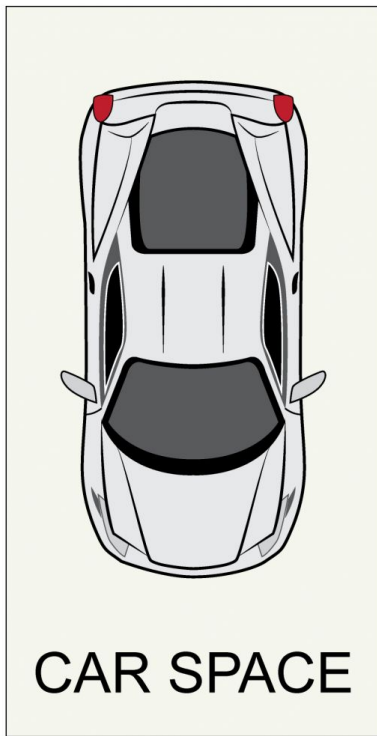
Type : Apartment
Price : \$ 610,000
Land Size : 55 sqm
View : <https://www.trueproperty.com.au/sale/nsw/inner-west/annandale/residential/apartment/728447>



Michael Catalano
02 8507 2444

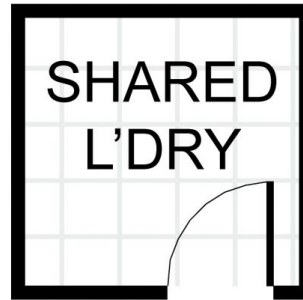


Nicholas Ellias
02 8507 2444

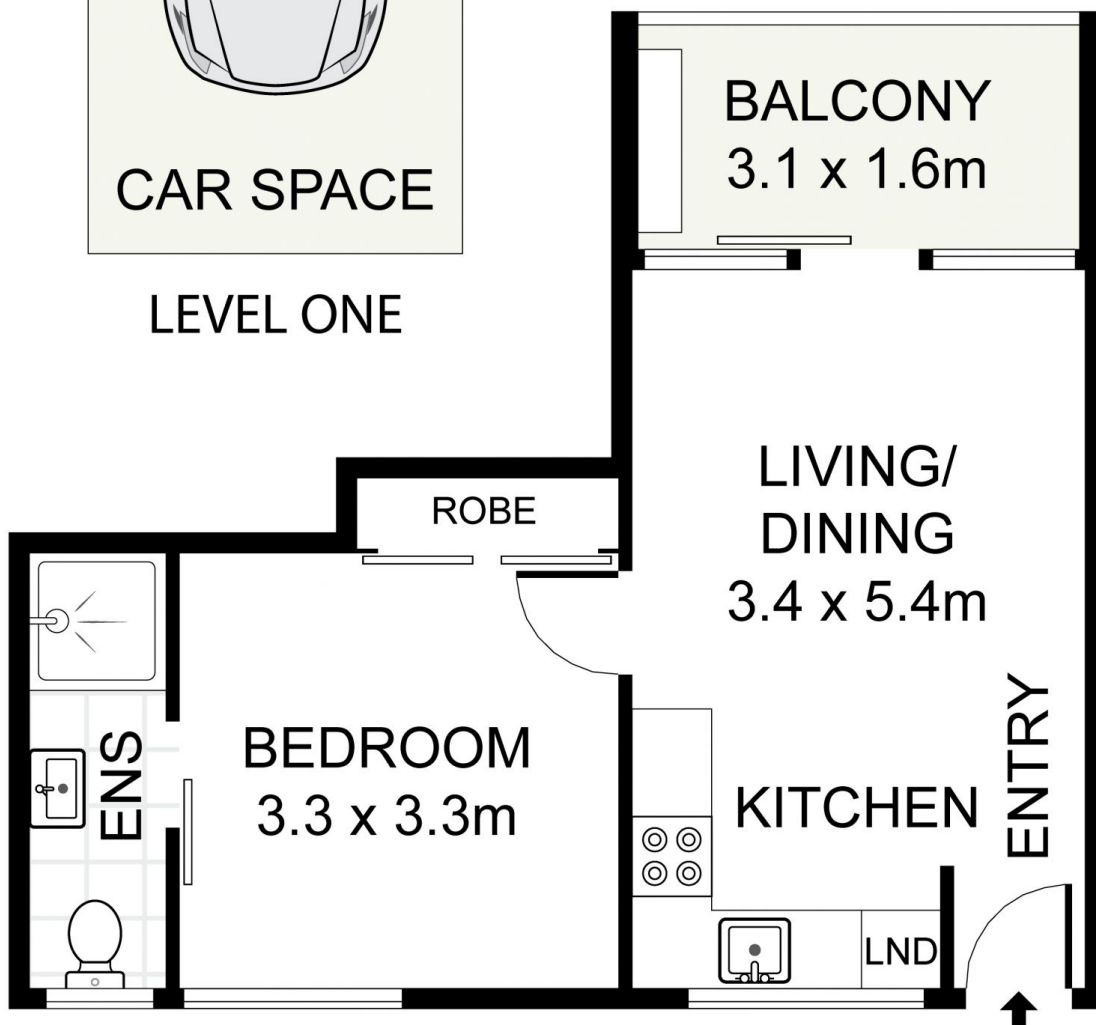


CAR SPACE

LEVEL ONE



SHARED
L'DRY



BALCONY
3.1 x 1.6m

LIVING/
DINING
3.4 x 5.4m

ROBE

BEDROOM
3.3 x 3.3m

ENS

KITCHEN

ENTRY

LND

LEVEL ONE

true =
PROPERTY

6/268 Johnston Street, Annandale

DISCLAIMER: PLANS SHOWN ARE FOR PRESENTATION PURPOSES AND ARE NOT PART OF ANY LEGAL DOCUMENT. ALL MEASUREMENTS AND FIGURES ARE APPROXIMATE.