



**11/803 New Canterbury Road Dulwich Hill NSW**

**2** **2** **2**

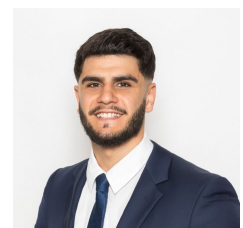
Built by an award-winning architectural interior and landscape team, this as new two bedroom courtyard apartment is a must to inspect. With its high-end finishes and spacious interiors nestled in the heart of the Inner West, this apartment is all about lifestyle. Perfectly set just a short walk to well-known local schools, boasting a vast range of trendy cafes, award winning restaurants, bakeries and wine bars. Minutes away from Dulwich Hill Light Rail and Bus Services.

- = Two large bedrooms, both with built in wardrobes
- = Two spacious tiled bathrooms
- = Two security car spaces including storage cage
- = Gourmet contemporary gas kitchen fitted with European appliances including a dishwasher
- = Spacious and oversized open plan living leading to entertainers courtyard which is bathed in natural sunlight

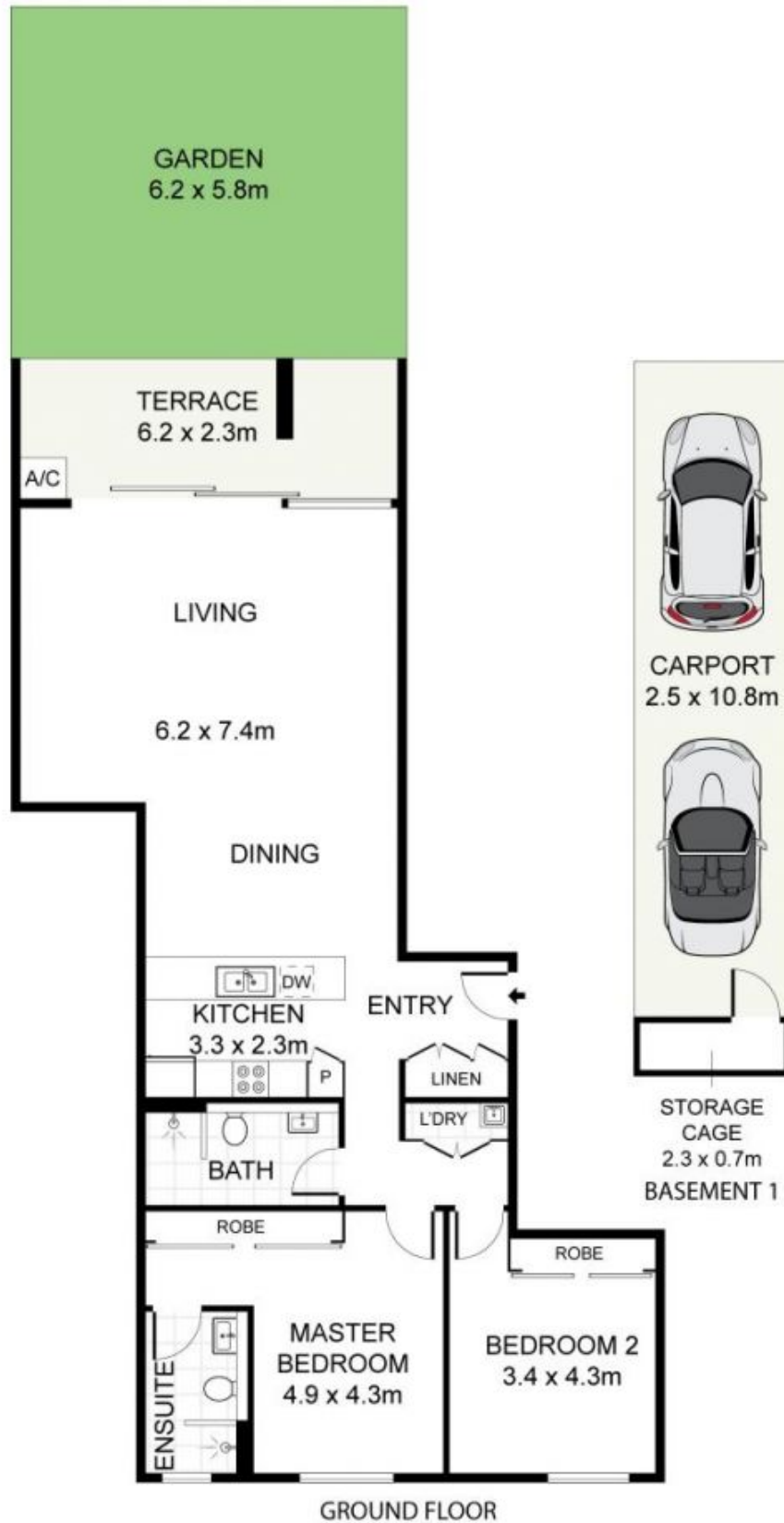
**Price** : \$ 1,240,000  
**Land Size** : 181 sqm  
**View** : <https://www.trueproperty.com.au/sale/nsw/inner-west/dulwich-hill/residential/apartment/7799071>



**Michael Catalano**  
8507 2444



**Nicholas Ellias**  
02 8507 2444



true=

11/803 New Canterbury Road, Dulwich Hill

DISCLAIMER: PLANS SHOWN ARE FOR PRESENTATION PURPOSES AND ARE NOT PART OF ANY LEGAL DOCUMENT. ALL MEASUREMENTS AND FIGURES ARE APPROXIMATE.