



Looking for a tenant who will treat your home like their own?
We will help you find them

Monthly Property Management Statistics

*Statistics supported by inspectrealestate.com.au

6 Days 0.07% \$500M+ 100%

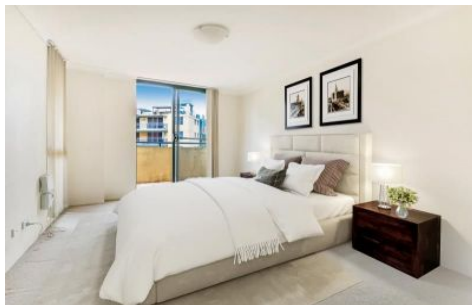
average time to secure tenancy

current vacancy rate

worth of property under management

focused on securing a quality tenancy & maximise profit on investment

CALL 02 8507 2444
info@trueproperty.com.au



129/1-3 Beresford Road Strathfield NSW

2 🛏 2 🚿 2 🚗

Available 18th March 2024 = Located within this highly sought-after security building comes the opportunity to secure this spacious and inviting property. Offering a practical layout and wonderful outside entertaining space, this is an absolute must to inspect.

View : <https://www.trueproperty.com.au/lease/nsw/inner-west/strathfield/residential/unit/7917039>

THE PROPERTY

- = Two spacious bedrooms with built-in wardrobes
- = Two bathrooms, one with a bathtub
- = Two security car spaces



Daniel Daher
8507 2444

THE FEATURES

- = Modern galley kitchen with stainless steel appliances and Caesar Stone benches
- = Open plan lounge and dining areas flowing to a spacious entertainers balcony
- = Internal laundry with dryer