



## 3/42 Albert Parade Ashfield NSW

2 1 1

Discover the epitome of contemporary living in this stylish two bedroom elevated ground floor apartment located in the heart of Ashfield. Boasting modern design, convenience, and a thriving locale, this residence offers an ideal blend of comfort and urban charm. Nestled in a sought-after pocket in Ashfield, enjoy the convenience of being minutes away from Ashfield Mall, transport options, parks, and an array of dining and entertainment choices.

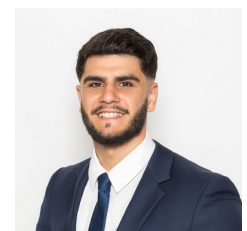
- = Two large bedrooms, both with built-in wardrobes
- = Open plan living and dining leading to a large leafy balcony
- = Oversized lock up garage
- = Located within a small boutique complex of only 12 apartments

[For full version visit the website](#)

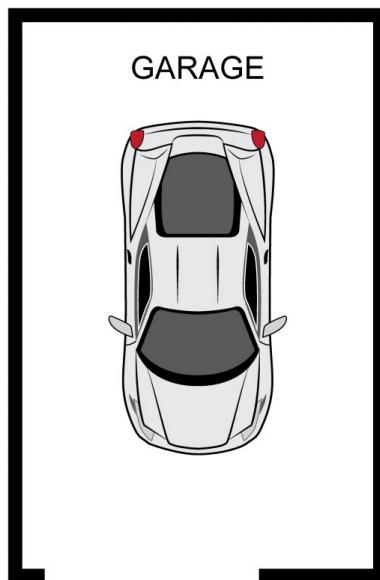
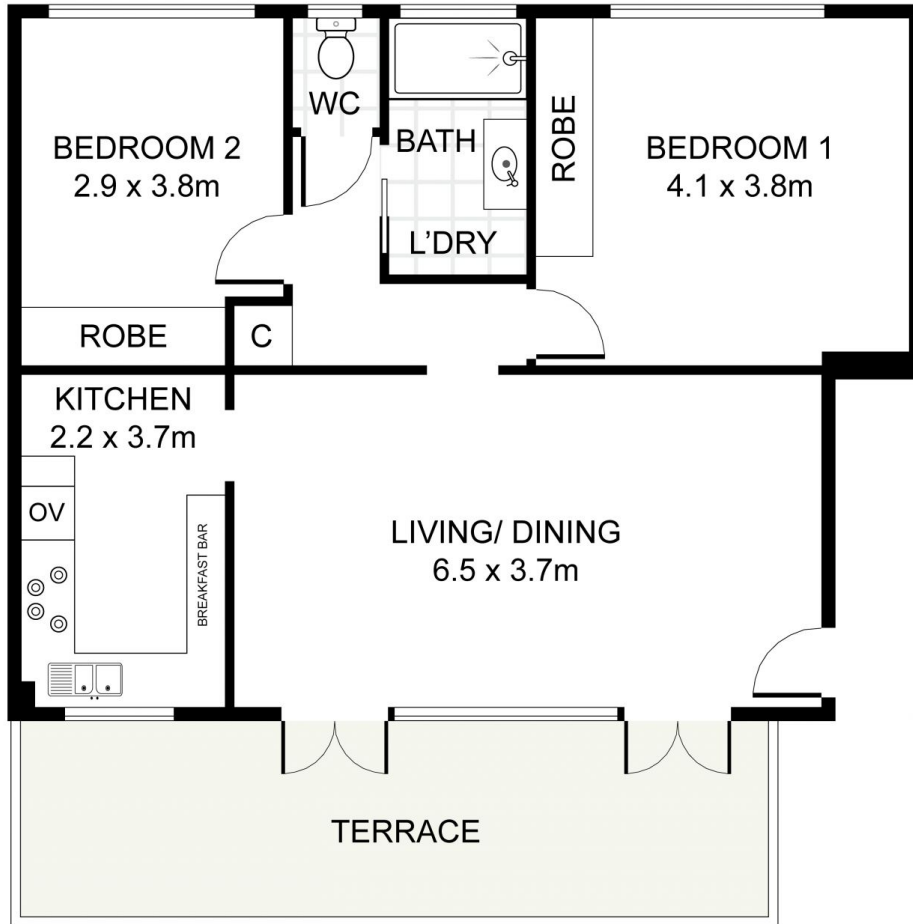
**Type** : Apartment  
**Price** : \$ 930,000  
**Land Size** : 92 sqm  
**View** : <https://www.trueproperty.com.au/sale/nsw/inner-west/ashfield/residential/apartment/7923216>



**Michael Catalano**  
02 8507 2444



**Nicholas Ellias**  
02 8507 2444



(NOT IN POSITION)



3/42 Albert Parade, Ashfield



DISCLAIMER: PLANS SHOWN ARE FOR PRESENTATION PURPOSES AND ARE NOT PART OF ANY LEGAL DOCUMENT. ALL MEASUREMENTS AND FIGURES ARE APPROXIMATE.