



605/22B George Street Leichhardt NSW

1 1 1

Built by an award-winning architectural interior and landscape team, this as new one bedroom apartment situated in 'Leichhardt Green' is a must to inspect. With its high-end finishes and spacious interiors nestled in the heart of the Inner West, this apartment is all about lifestyle. Perfectly set just a short walk to well-known local schools and universities, boasting a vast range of trendy cafes, award winning restaurants, bakeries and wine bars. Minutes away from Taverners Hill Light Rail, Lewisham Train Station and Bus Services.

- = One large bedroom with built in wardrobe and balcony access
- = Additional study space fit
- = Gourmet contemporary gas kitchen fitted with European appliances
- = One spacious tiled bathroom

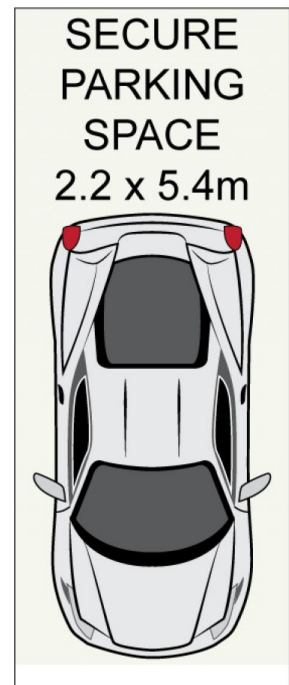
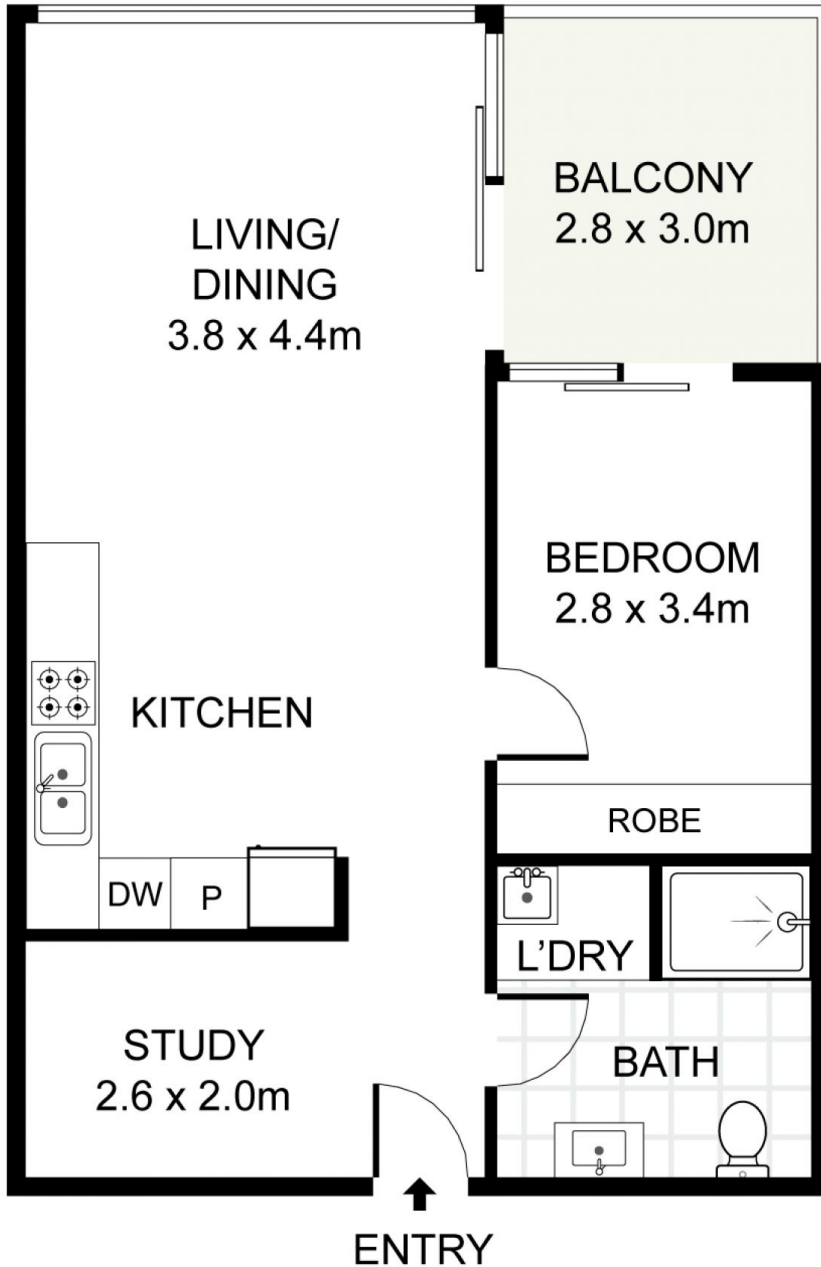
Price : \$ 800,000
Land Size : 74 sqm
View : <https://www.trueproperty.com.au/sale/nsw/inner-west/leichhardt/residential/apartment/7933326>



Michael Catalano
8507 2444



Nicholas Ellias
02 8507 2444



(NOT TO SCALE)



INT: 55 m²

B2 605/22 George Street, Leichhardt



DISCLAIMER: PLANS SHOWN ARE FOR PRESENTATION PURPOSES AND ARE NOT PART OF ANY LEGAL DOCUMENT. ALL MEASUREMENTS AND FIGURES ARE APPROXIMATE.