



Looking for a tenant who will treat your home like their own?  
We will help you find them

Monthly Property Management Statistics

\*Statistics supported by inspectrealestate.com.au

6 Days 0.07% \$500M+ 100%

average time to secure tenancy

current vacancy rate

worth of property under management

focused on securing a quality tenancy & maximise profit on investment

CALL 02 8507 2444  
info@trueproperty.com.au



1/101-103 Lilyfield Road Lilyfield NSW

2 1 1

Available 16th October 2024 = Unparalleled in size and position these wonderful apartments offer a fantastic and practical layout for all those who view. Located on one of Lilyfield's most sought after locations these apartments offer a peaceful and relaxed setting for all those who view.

**Type** : Apartment

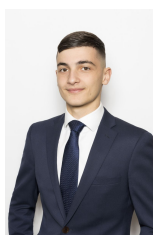
**View** : <https://www.trueproperty.com.au/lease/nsw/inner-west/lilyfield/residential/apartment/8140237>

**THE PROPERTY**

- = Two large bedrooms
- = One well appointed bathroom
- = Parking for one car available on site

**THE FEATURES**

- = Impressive timber kitchen with ample storage
- = Light filled separate living and dining room



**Daniel Daher**  
8507 2444

[For full version visit the website](https://www.trueproperty.com.au)