



## 28/127 Railway Parade Erskineville NSW

2 1 1

Set within a distinctive warehouse conversion rich in character, this welcoming two-bedroom apartment delivers easy living in one of Erskineville's most desirable pockets. Tucked away on the top floor of the building for added privacy, it offers a calm escape while still being just moments from Erskineville Village, known for its vibrant community feel, boutique cafés, and celebrated dining. With Erskineville Park, the Oval, Eveleigh Farmers Markets, and transport all within a short stroll, convenience and lifestyle come together seamlessly.

- = Two well proportioned bedrooms, each with mirrored built-ins and great natural light
- = Neat and modern bathroom including bathtub
- = Internal laundry facilities

[For full version visit the website](#)

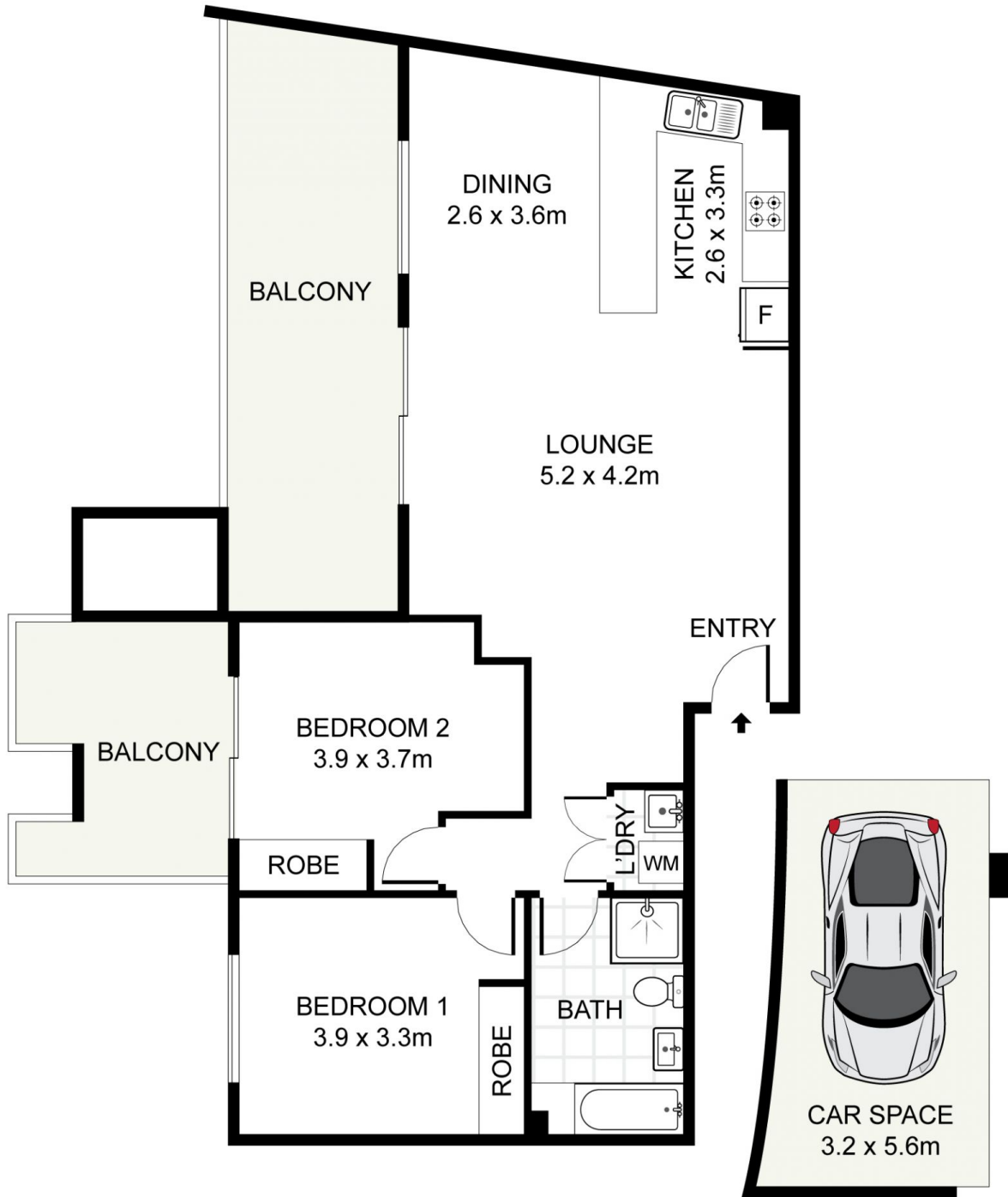
**Type** : Apartment  
**Land Size** : 127 sqm  
**View** : <https://www.trueproperty.com.au/sale/nsw/inner-west/erskineville/residential/apartment/8555205>



**Michael Catalano**  
02 8507 2414



**Nicholas Ellias**  
02 8507 2444



## 28/127 Railway Parade, Erskineville

true<sup>®</sup>

DISCLAIMER: PLANS SHOWN ARE FOR PRESENTATION PURPOSES AND ARE NOT PART OF ANY LEGAL DOCUMENT. ALL MEASUREMENTS AND FIGURES ARE APPROXIMATE.